

SARS1 RABBIT PAB

Cat.#: S219152

Product Name: Anti-SARS1 Rabbit Polyclonal Antibody

Synonyms: SARS; SERS; SERRS; NEDMAS

UNIPROT ID: P49591 (Gene Accession - BC000716)

Background: This gene belongs to the class II amino-acyl tRNA family. The encoded enzyme catalyzes the transfer of L-serine to tRNA (Ser) and is related to bacterial and yeast counterparts. Multiple alternatively spliced transcript variants have been described but the biological validity of all variants is unknown. [provided by RefSeq, Jul 2010]

Immunogen: Fusion protein of human SARS1

Applications: ELISA, WB, IHC

Recommended Dilutions: IHC: 50-300;WB: 1000-5000;ELISA: 5000-10000

Host Species: Rabbit

Clonality: Rabbit Polyclonal

Isotype: Immunogen-specific rabbit IgG

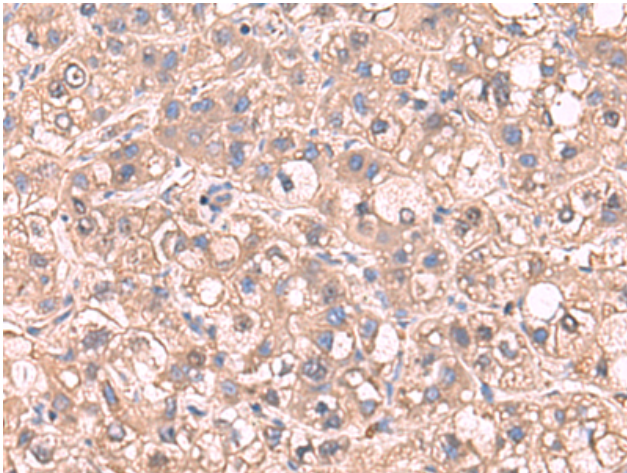
Purification: Antigen affinity purification

Species Reactivity: Human, Mouse, Rat

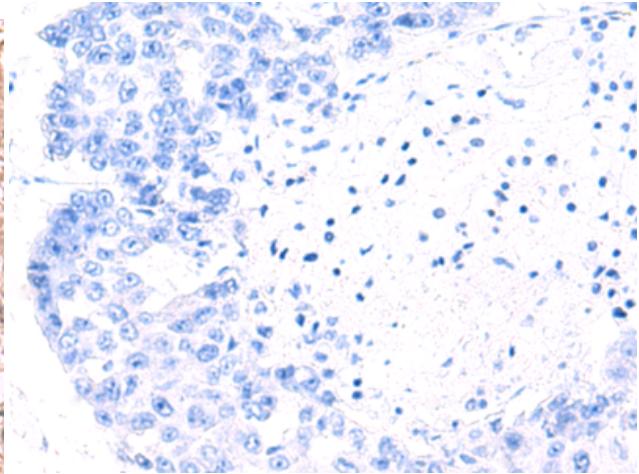
Constituents: PBS (without Mg²⁺ and Ca²⁺), pH 7.4, 150 mM NaCl, 0.05% Sodium Azide and 40% glycerol

Research Areas: Epigenetics and Nuclear Signaling

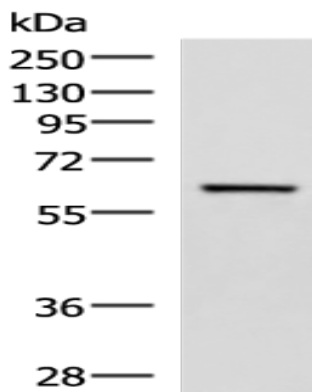
Storage & Shipping: Store at -20°C. Avoid repeated freezing and thawing



Immunohistochemistry analysis of paraffin embedded Human liver cancer tissue using 219152(SARS1 Antibody) at a dilution of 1/65(Cytoplasm).



In comparison with the IHC on the left, the same paraffin-embedded Human liver cancer tissue is first treated with the fusion protein and then with 219152(Anti-SARS1 Antibody) at dilution 1/65.



Gel: 8%SDS-PAGE, Lysate: 40 μ g;
Lane: Human fetal brain tissue lysate;
Primary antibody: 219152(SARS1 Antibody) at dilution 1/850;
Secondary antibody: HRP-conjugated Goat anti rabbit IgG at 1/5000 dilution;
Exposure time: 40 seconds