

SAV1 RABBIT PAB

Cat.#: S219368

Product Name: Anti-SAV1 Rabbit Polyclonal Antibody

Synonyms: SAV; WW45; WWP4

UNIPROT ID: Q9H4B6 (Gene Accession - BC020537)

Background: WW domain-containing proteins are found in all eukaryotes and play an important role in the regulation of a wide variety of cellular functions such as protein degradation, transcription, and RNA splicing. This gene encodes a protein with two WW domains, a SARAH domain, and a coiled-coil region and is ubiquitously expressed in adult tissues. This protein binds to MST1 (mammalian sterile 20-like kinase 1) and promotes MST1-induced apoptosis. It has also been shown to bind to HAX1 (hematopoietic cell-specific protein 1 (HS1)-associated protein X-1) and to attenuate the anti-apoptotic effects of HAX1. Studies in human and mouse suggest this gene acts as a tumor suppressor.

Immunogen: Fusion protein of human SAV1

Applications: ELISA, WB, IHC

Recommended Dilutions: IHC: 100-300;WB: 500-2000;ELISA: 5000-10000

Host Species: Rabbit

Clonality: Rabbit Polyclonal

Isotype: Immunogen-specific rabbit IgG

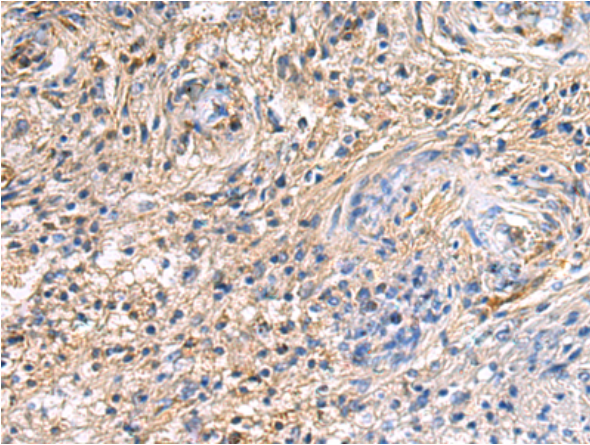
Purification: Antigen affinity purification

Species Reactivity: Human, Mouse, Rat

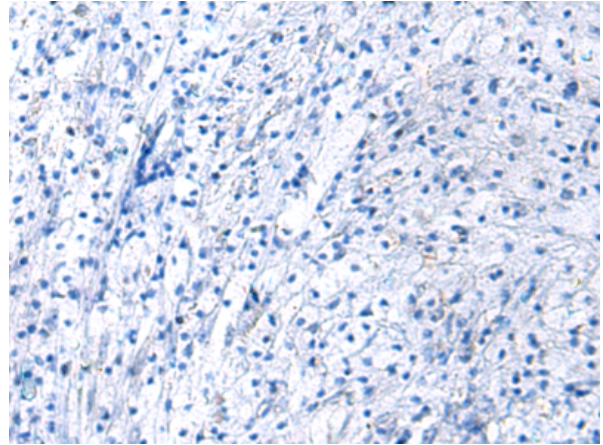
Constituents: PBS (without Mg²⁺ and Ca²⁺), pH 7.4, 150 mM NaCl, 0.05% Sodium Azide and 40% glycerol

Research Areas: Signal Transduction

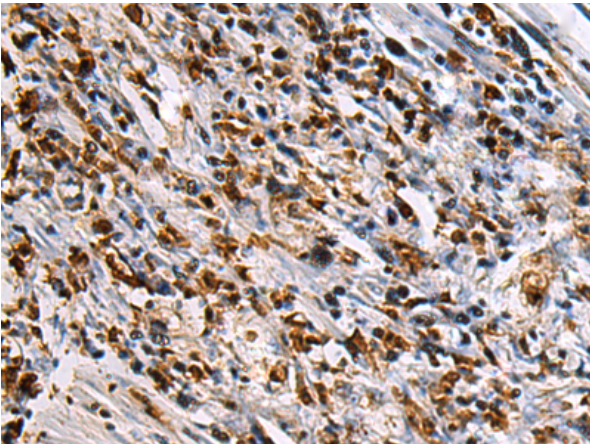
Storage & Shipping: Store at -20°C. Avoid repeated freezing and thawing



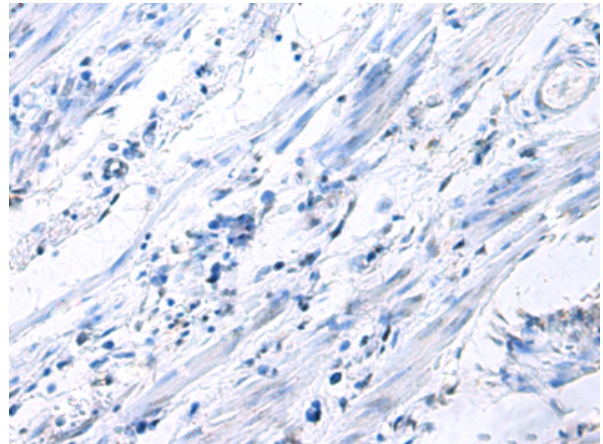
Immunohistochemistry analysis of paraffin embedded Human brain tissue using 219368(SAV1 Antibody) at a dilution of 1/90(Cytoplasm or Nucleus).



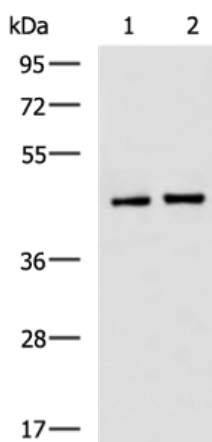
In comparison with the IHC on the left, the same paraffin-embedded Human brain tissue is first treated with the fusion protein and then with 219368(Anti-SAV1 Antibody) at dilution 1/90.



The image on the left is immunohistochemistry of paraffin-embedded Human gastric cancer tissue using 219368(Anti-SAV1 Antibody) at a dilution of 1/90.



In comparison with the IHC on the left, the same paraffin-embedded Human gastric cancer tissue is first treated with fusion protein and then with D226556(Anti-SAV1 Antibody) at dilution 1/90.



Gel: 8%SDS-PAGE, Lysate: 40 µg;
 Lane 1-2: HUVEC, PC-3 cell lysates;
 Primary antibody: 219368(SAV1 Antibody) at dilution 1/800;
 Secondary antibody: HRP-conjugated Goat anti rabbit IgG at 1/5000 dilution;
 Exposure time: 1 minute



Product Description

Pioneering GTPase and Oncogene Product Development since 2010
