

SBDS RABBIT MAB

Cat.#: N263541

Product Name: Anti-SBDS Rabbit Monoclonal Antibody

Synonyms: SDS; SWDS; CGI-97

UNIPROT ID: Q9Y3A5

Background: Required for the assembly of mature ribosomes and ribosome biogenesis.

Immunogen: A synthetic peptide of human SBDS

Applications: WB, ICC/IF, IP

Recommended Dilutions: WB: 1/500-1/1000 IF: 1/50-1/200 IP: 1/20

Host Species: Rabbit

Clonality: Rabbit Monoclonal

Clone ID: R02-2G2

MW: Calculated MW: 29 kDa; Observed MW: 29 kDa

Isotype: IgG

Purification: Affinity Purified

Species Reactivity: Human

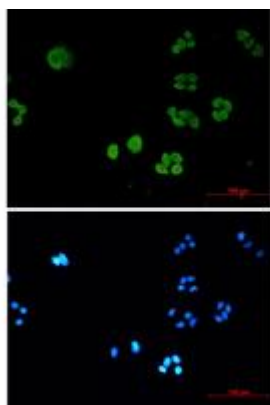
Conjugation: Unconjugated

Modification: Unmodified

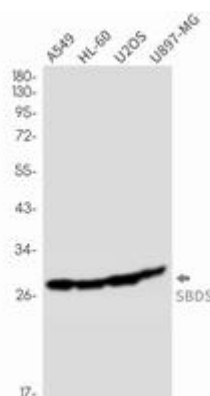
Constituents: PBS (without Mg²⁺ and Ca²⁺), pH 7.3 containing 50% glycerol, 0.5% BSA and 0.02% sodium azide

Research Areas: Epigenetics and Nuclear Signaling

Storage & Shipping: Store at -20°C. Avoid repeated freezing and thawing



Immunocytochemistry analysis of SBDS (green) in Hela using SBDS antibody, and DAPI (blue)



Western blot analysis of SBDS in A549, HL-60, U2OS, U87-MG lysates using SBDS antibody.



Product Description

Pioneering GTPase and Oncogene Product Development since 2010
