

## SBDS RABBIT PAB

**Cat.#:** S219554

**Product Name:** Anti-SBDS Rabbit Polyclonal Antibody

**Synonyms:** SDS; SWDS; CGI-97

**UNIPROT ID:** Q9Y3A5 (Gene Accession - BC065700 )

**Background:** This gene encodes a highly conserved protein that plays an essential role in ribosome biogenesis. The encoded protein interacts with elongation factor-like GTPase 1 to disassociate eukaryotic initiation factor 6 from the late cytoplasmic pre-60S ribosomal subunit allowing assembly of the 80S subunit. Mutations within this gene are associated with the autosomal recessive disorder Shwachman-Bodian-Diamond syndrome. This gene has a closely linked pseudogene that is distally located.

**Immunogen:** Fusion protein of human SBDS

**Applications:** ELISA, WB, IHC

**Recommended Dilutions:** IHC: 50-100;WB: 500-2000;ELISA: 5000-10000

**Host Species:** Rabbit

**Clonality:** Rabbit Polyclonal

**Isotype:** Immunogen-specific rabbit IgG

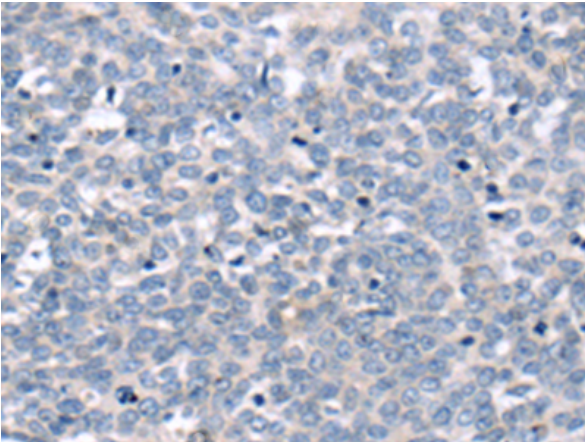
**Purification:** Antigen affinity purification

**Species Reactivity:** Human, Mouse, Rat

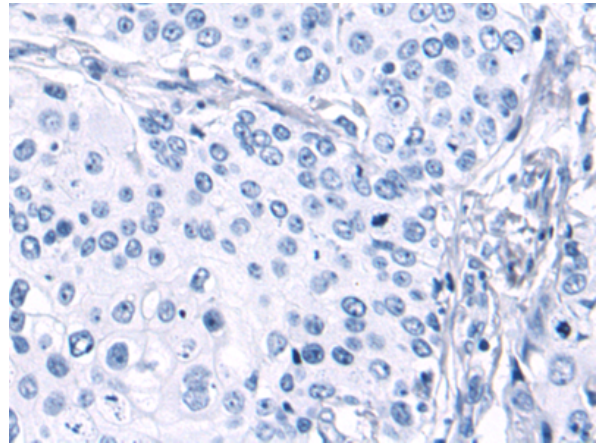
**Constituents:** PBS (without Mg<sup>2+</sup> and Ca<sup>2+</sup>), pH 7.4, 150 mM NaCl, 0.05% Sodium Azide and 40% glycerol

**Research Areas:** Epigenetics and Nuclear Signaling

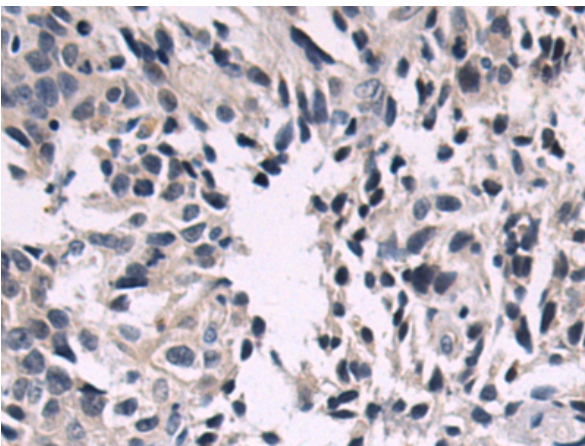
**Storage & Shipping:** Store at -20°C. Avoid repeated freezing and thawing



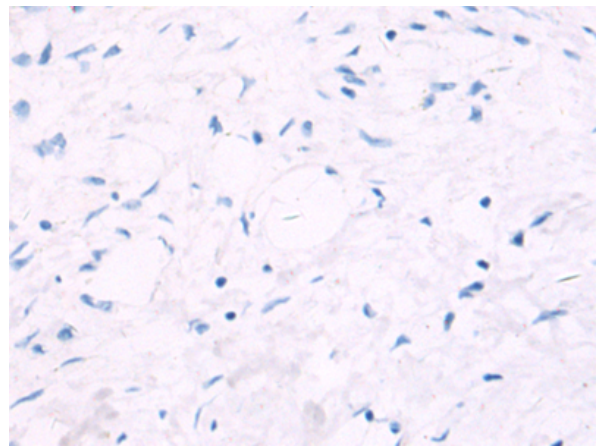
Immunohistochemistry analysis of paraffin embedded Human cervical cancer tissue using 219554(SBDS Antibody) at a dilution of 1/65(Cytoplasm).



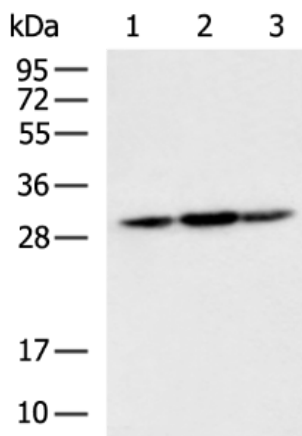
In comparison with the IHC on the left, the same paraffin-embedded Human cervical cancer tissue is first treated with the fusion protein and then with 219554(Anti-SBDS Antibody) at dilution 1/65.



The image on the left is immunohistochemistry of paraffin-embedded Human gastric cancer tissue using 219554(Anti-SBDS Antibody) at a dilution of 1/65.



In comparison with the IHC on the left, the same paraffin-embedded Human gastric cancer tissue is first treated with fusion protein and then with D227701(Anti-SBDS Antibody) at dilution 1/65.



Gel: 12%SDS-PAGE, Lysate: 40 µg;  
 Lane 1-3: HeLa, HepG2, 293T cell lysates;  
 Primary antibody: 219554(SBDS Antibody) at dilution 1/700;  
 Secondary antibody: HRP-conjugated Goat anti rabbit IgG at 1/5000 dilution;  
 Exposure time: 30 seconds



# Product Description

Pioneering GTPase and Oncogene Product Development since 2010

---