

SCARB1 RABBIT MAB

Cat.#: N262871

Product Name: Anti-SCARB1 Rabbit Monoclonal Antibody

Synonyms: CLA1; SRB1; CLA-1; SR-BI; CD36LI; HDLQTL6; Scavenging Receptor SR-BI

UNIPROT ID: Q8WTV0

Background: Receptor for different ligands such as phospholipids, cholesterol ester, lipoproteins, phosphatidylserine and apoptotic cells. Probable receptor for HDL, located in particular region of the plasma membrane, called caveolae. Facilitates the flux of free and esterified cholesterol between the cell surface and extracellular donors and acceptors, such as HDL and to a lesser extent, apoB-containing lipoproteins and modified lipoproteins.

Immunogen: Recombinant protein of human Scavenging Receptor SR-BI

Applications: WB,IP

Recommended Dilutions: WB: 1/500-1/1000 IP: 1/20

Host Species: Rabbit

Clonality: Rabbit Monoclonal

Clone ID: R07-4H3

MW: Calculated MW: 61 kDa; Observed MW: 80 kDa

Isotype: IgG

Purification: Affinity Purified

Species Reactivity: Human,Mouse

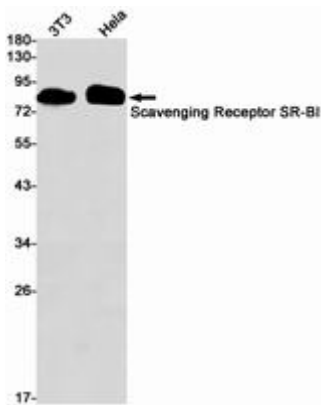
Conjugation: Unconjugated

Modification: Unmodified

Constituents: PBS (without Mg²⁺ and Ca²⁺), pH 7.3 containing 50% glycerol, 0.5% BSA and 0.02% sodium azide

Research Areas: Microbiology

Storage & Shipping: Store at -20°C. Avoid repeated freezing and thawing



Western blot analysis of Scavenging Receptor SRBI in 3T3, HeLa lysates using SCARBI antibody.