

SCGB2A1 RABBIT PAB

Cat.#: S217675

Product Name: Anti-SCGB2A1 Rabbit Polyclonal Antibody

Synonyms: LPHC; LPNC; MGB2; UGB3

UNIPROT ID: O75556 (Gene Accession - BC062218)

Background: Involved in androgen receptor signaling pathway. Located in extracellular space. [provided by Alliance of Genome Resources, Apr 2022]

Immunogen: Fusion protein of human SCGB2A1

Applications: ELISA, IHC

Recommended Dilutions: IHC: 100-300; ELISA: 5000-10000

Host Species: Rabbit

Clonality: Rabbit Polyclonal

Isotype: Immunogen-specific rabbit IgG

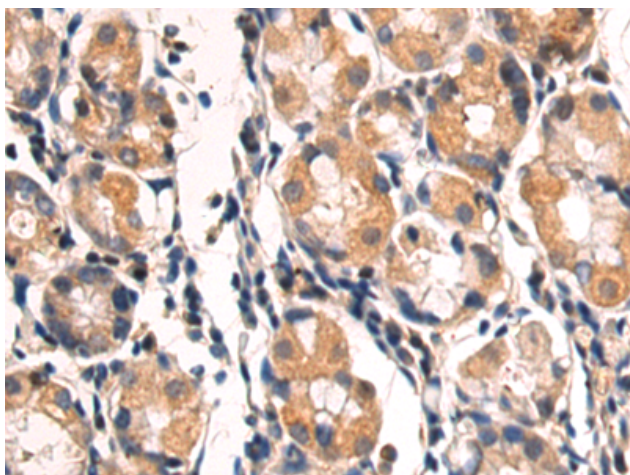
Purification: Antigen affinity purification

Species Reactivity: Human

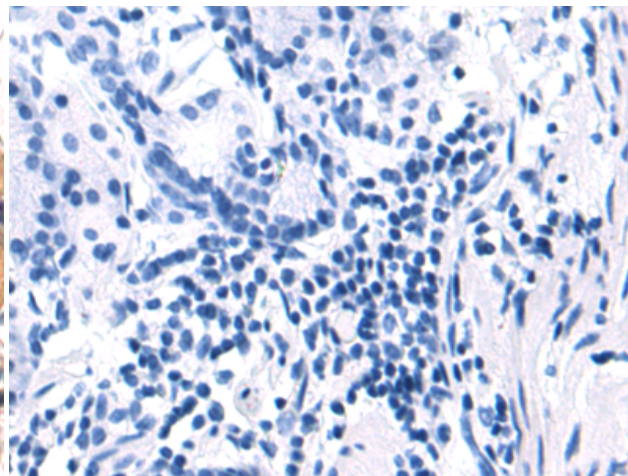
Constituents: PBS (without Mg²⁺ and Ca²⁺), pH 7.4, 150 mM NaCl, 0.05% Sodium Azide and 40% glycerol

Research Areas: Signal Transduction, Cancer

Storage & Shipping: Store at -20°C. Avoid repeated freezing and thawing



Immunohistochemistry analysis of paraffin embedded Human gastric cancer tissue using 217675(SCGB2A1 Antibody) at a dilution of 1/100(Cytoplasm).



In comparison with the IHC on the left, the same paraffin-embedded Human gastric cancer tissue is first treated with the fusion protein and then with 217675(Anti-SCGB2A1 Antibody) at dilution 1/100.