

SCGB3A1 RABBIT PAB

Cat.#: S220880

Product Name: Anti-SCGB3A1 Rabbit Polyclonal Antibody

Synonyms: HIN1; HIN-1; LU105; UGRP2; PnSP-2

UNIPROT ID: Q96QR1 (Gene Accession - NP_443095)

Background: Potential growth inhibitory cytokine.

Immunogen: Synthetic peptide of human SCGB3A1

Applications: ELISA, IHC

Recommended Dilutions: IHC: 25-100; ELISA: 5000-10000

Host Species: Rabbit

Clonality: Rabbit Polyclonal

Isotype: Immunogen-specific rabbit IgG

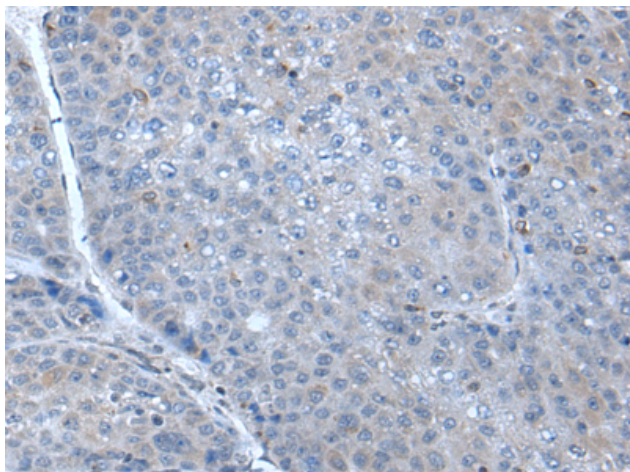
Purification: Antigen affinity purification

Species Reactivity: Human, Mouse

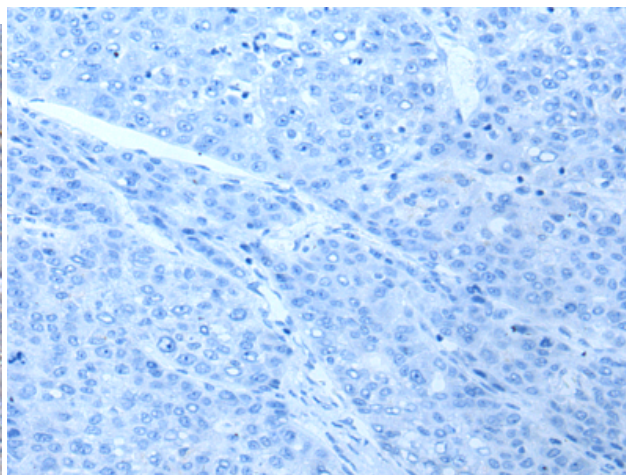
Constituents: PBS (without Mg²⁺ and Ca²⁺), pH 7.4, 150 mM NaCl, 0.05% Sodium Azide and 40% glycerol

Research Areas: Signal Transduction, Cancer, Immunology

Storage & Shipping: Store at -20°C. Avoid repeated freezing and thawing



Immunohistochemistry analysis of paraffin embedded Human liver cancer tissue using 220880(SCGB3A1 Antibody) at a dilution of 1/25(Secreted).



In comparison with the IHC on the left, the same paraffin-embedded Human liver cancer tissue is first treated with the synthetic peptide and then with 220880(Anti-SCGB3A1 Antibody) at dilution 1/25.