

## SCMH1 RABBIT PAB

**Cat.#:** S218765

**Product Name:** Anti-SCMH1 Rabbit Polyclonal Antibody

**Synonyms:** Scml3

**UNIPROT ID:** Q96GD3 (Gene Accession - BC009752 )

**Background:** Associates with Polycomb group (PcG) multiprotein complexes; the complex class is required to maintain the transcriptionally repressive state of some genes.

**Immunogen:** Fusion protein of human SCMHI

**Applications:** ELISA, WB, IHC

**Recommended Dilutions:** IHC: 100-300;WB: 500-2000;ELISA: 5000-10000

**Host Species:** Rabbit

**Clonality:** Rabbit Polyclonal

**Isotype:** Immunogen-specific rabbit IgG

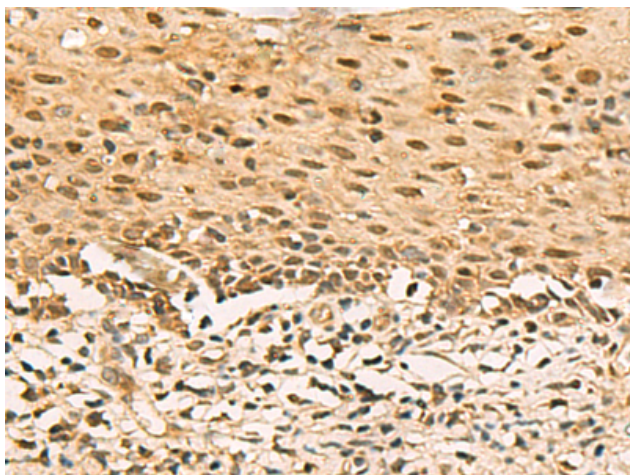
**Purification:** Antigen affinity purification

**Species Reactivity:** Human, Mouse

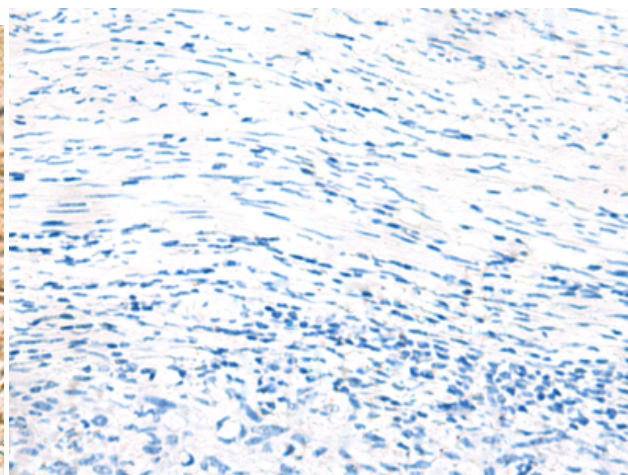
**Constituents:** PBS (without Mg<sup>2+</sup> and Ca<sup>2+</sup>), pH 7.4, 150 mM NaCl, 0.05% Sodium Azide and 40% glycerol

**Research Areas:** Epigenetics and Nuclear Signaling

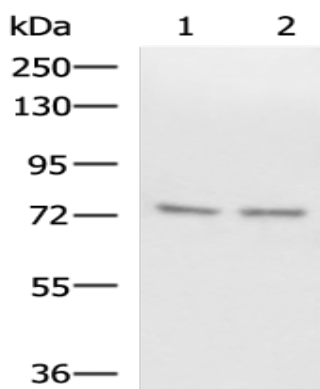
**Storage & Shipping:** Store at -20°C. Avoid repeated freezing and thawing



Immunohistochemistry analysis of paraffin embedded Human cervical cancer tissue using 218765(SCMH1 Antibody) at a dilution of 1/120(Nucleus).



In comparison with the IHC on the left, the same paraffin-embedded Human cervical cancer tissue is first treated with the fusion protein and then with 218765(Anti-SCMH1 Antibody) at dilution 1/120.



Gel: 6%SDS-PAGE, Lysate: 40  $\mu$ g;  
Lane 1-2: Raji and 231 cell lysates;  
Primary antibody: 218765(SCMH1 Antibody) at dilution 1/1000;  
Secondary antibody: HRP-conjugated Goat anti rabbit IgG at 1/5000 dilution;  
Exposure time: 1 minute