

SCML2 RABBIT PAB

Cat.#: N225166

Product Name: Anti-SCML2 Rabbit pAb

Synonyms: SCML2; Sex comb on midleg-like protein 2

UNIPROT ID: Q9UQR0

Background: Putative Polycomb group (PcG) protein.

Immunogen: Synthesized peptide derived from the Internal region of human SCML2.

Applications: WB,ELISA

Recommended Dilutions: WB: 1/500-1/1000 ELISA: 1/10000

Host Species: Rabbit

Clonality: Rabbit Polyclonal

Clone ID: -

MW: Calculated MW: 77 kDa; Observed MW: 77 kDa

Isotype: IgG

Purification: Affinity Purified

Species Reactivity: Human

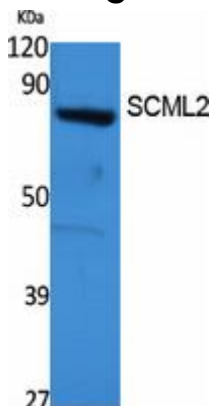
Conjugation: Unconjugated

Modification: Unmodified

Constituents: PBS (without Mg²⁺ and Ca²⁺), pH 7.3 containing 50% glycerol, 0.5% BSA and 0.02% sodium azide

Research Areas: Epigenetics and Nuclear Signaling

Storage & Shipping: Store at -20°C. Avoid repeated freezing and thawing



Western blot analysis of SCML2 in 293 lysates using SCML2 antibody.