

SCNM1 RABBIT PAB

Cat.#: S219028

Product Name: Anti-SCNM1 Rabbit Polyclonal Antibody

Synonyms:

UNIPROT ID: Q9BWG6 (Gene Accession - BC000264)

Background: SCNM1 is a zinc finger protein and putative splicing factor. In mice, Scnm1 modifies phenotypic expression of Scn8a (MIM 600702) mutations (Buchner et al., 2003 [PubMed 12920299]). Plays a role in alternative splicing of pre-mRNAs, possibly by contributing to the selection of non-consensus donor sites.

Immunogen: Fusion protein of human SCNM1

Applications: ELISA, IHC

Recommended Dilutions: IHC: 150-300; ELISA: 5000-10000

Host Species: Rabbit

Clonality: Rabbit Polyclonal

Isotype: Immunogen-specific rabbit IgG

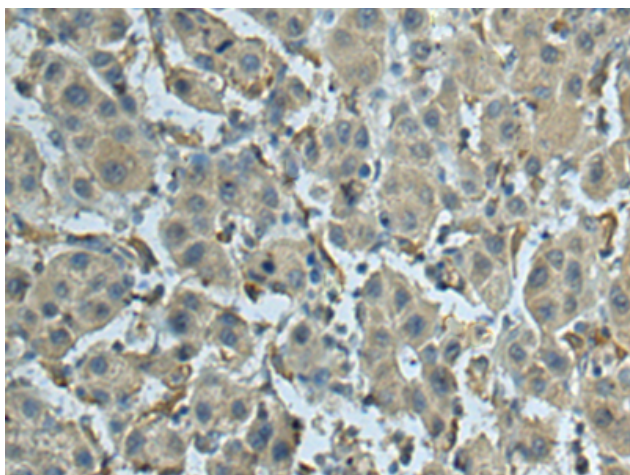
Purification: Antigen affinity purification

Species Reactivity: Human, Mouse

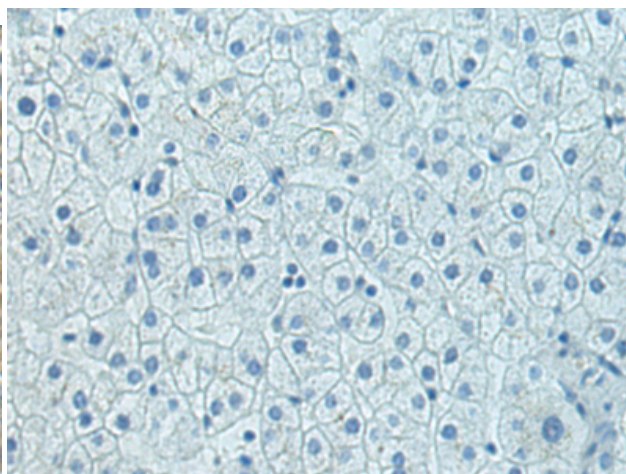
Constituents: PBS (without Mg²⁺ and Ca²⁺), pH 7.4, 150 mM NaCl, 0.05% Sodium Azide and 40% glycerol

Research Areas: Epigenetics and Nuclear Signaling

Storage & Shipping: Store at -20°C. Avoid repeated freezing and thawing



Immunohistochemistry analysis of paraffin embedded Human liver cancer tissue using 219028(SCNM1 Antibody) at a dilution of 1/140(Cytoplasm).



In comparison with the IHC on the left, the same paraffin-embedded Human liver cancer tissue is first treated with the fusion protein and then with 219028(Anti-SCNM1 Antibody) at dilution 1/140.