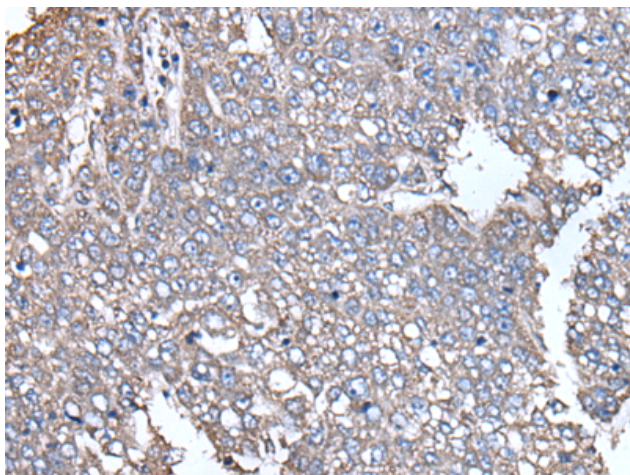


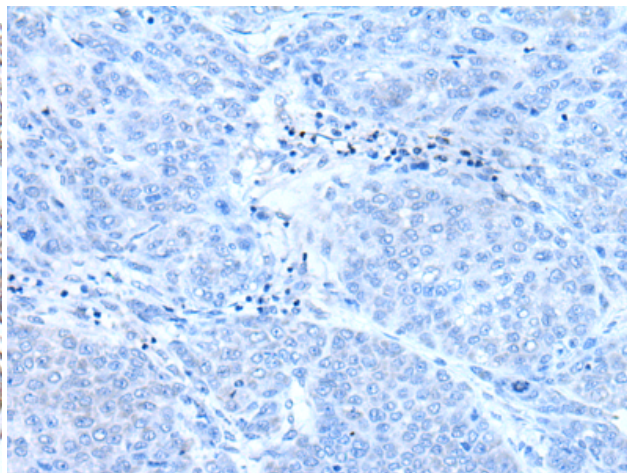
SCP2 RABBIT PAB**Cat.#:** S211530**Product Name:** Anti-SCP2 Rabbit Polyclonal Antibody**Synonyms:** NLTP; SCPX; SCP-2; SCP-X; NSL-TP; SCP-CHI**UNIPROT ID:** P22307 (Gene Accession - BC005911)

Background: This gene encodes two proteins: sterol carrier protein X (SCPx) and sterol carrier protein 2 (SCP2), as a result of transcription initiation from 2 independently regulated promoters. The transcript initiated from the proximal promoter encodes the longer SCPx protein, and the transcript initiated from the distal promoter encodes the shorter SCP2 protein, with the 2 proteins sharing a common C-terminus. Evidence suggests that the SCPx protein is a peroxisome-associated thiolase that is involved in the oxidation of branched chain fatty acids, while the SCP2 protein is thought to be an intracellular lipid transfer protein. This gene is highly expressed in organs involved in lipid metabolism, and may play a role in Zellweger syndrome, in which cells are deficient in peroxisomes and have impaired bile acid synthesis. Alternative splicing of this gene produces multiple transcript variants, some encoding different isoforms.

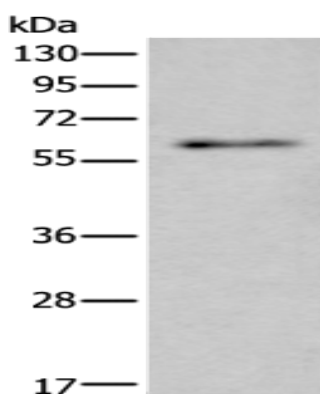
Immunogen: Fusion protein of human SCP2**Applications:** ELISA, WB, IHC**Recommended Dilutions:** IHC: 25-100;WB: 500-2000;ELISA: 5000-10000**Host Species:** Rabbit**Clonality:** Rabbit Polyclonal**Isotype:** Immunogen-specific rabbit IgG**Purification:** Antigen affinity purification**Species Reactivity:** Human, Mouse, Rat**Constituents:** PBS (without Mg²⁺ and Ca²⁺), pH 7.4, 150 mM NaCl, 0.05% Sodium Azide and 40% glycerol**Research Areas:** Metabolism, Cancer**Storage & Shipping:** Store at -20°C. Avoid repeated freezing and thawing



Immunohistochemistry analysis of paraffin embedded Human liver cancer tissue using 211530 (SCP2 Antibody) at a dilution of 1/35 (Cytoplasm).



In comparison with the IHC on the left, the same paraffin-embedded Human liver cancer tissue is first treated with the fusion protein and then with 211530 (Anti-SCP2 Antibody) at dilution 1/35.



Gel: 8% SDS-PAGE, Lysate: 40 µg;
Lane: Mouse testis tissue lysate;
Primary antibody: 211530 (SCP2 Antibody) at dilution 1/350;
Secondary antibody: Goat anti rabbit IgG at 1/8000 dilution;
Exposure time: 5 seconds