

SCPEP1 RABBIT PAB

Cat.#: S217767

Product Name: Anti-SCPEP1 Rabbit Polyclonal Antibody

Synonyms: RISC; HSCPI

UNIPROT ID: Q9HB40 (Gene Accession - BC072405)

Background: Retinoid-inducible serine carboxypeptidase is an enzyme that in humans is encoded by the SCPEP1 gene. May be involved in vascular wall and kidney homeostasis.

Immunogen: Fusion protein of human SCPEP1

Applications: ELISA, IHC

Recommended Dilutions: IHC: 20-100; ELISA: 2000-5000

Host Species: Rabbit

Clonality: Rabbit Polyclonal

Isotype: Immunogen-specific rabbit IgG

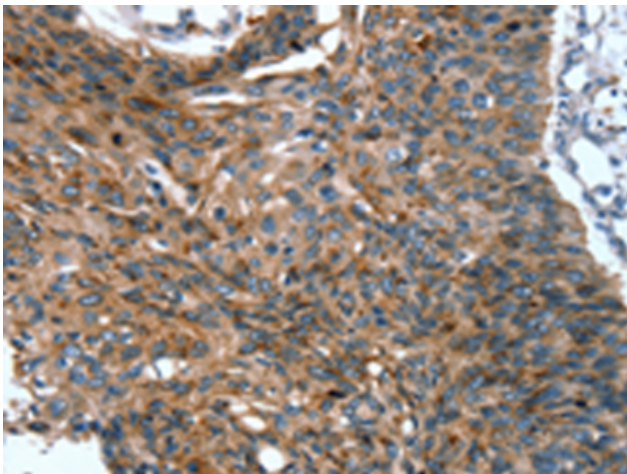
Purification: Antigen affinity purification

Species Reactivity: Human, Mouse, Rat

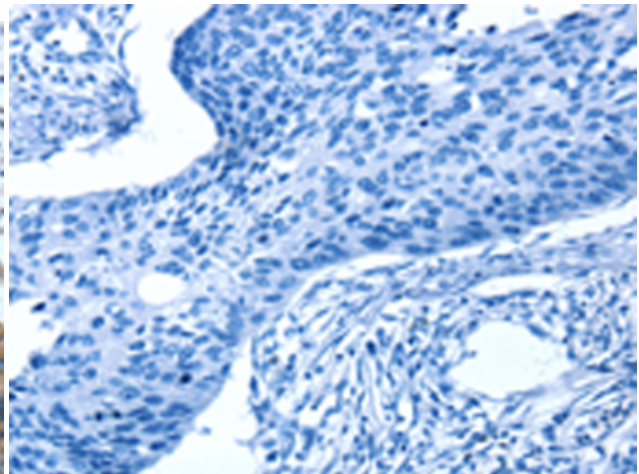
Constituents: PBS (without Mg²⁺ and Ca²⁺), pH 7.4, 150 mM NaCl, 0.05% Sodium Azide and 40% glycerol

Research Areas: Cell Biology, Cardiovascular

Storage & Shipping: Store at -20°C. Avoid repeated freezing and thawing



Immunohistochemistry analysis of paraffin embedded Human esophagus cancer tissue using 217767(SCPEP1 Antibody) at a dilution of 1/20(Cytoplasm).



In comparison with the IHC on the left, the same paraffin-embedded Human esophagus cancer tissue is first treated with the fusion protein and then with 217767(Anti-SCPEP1 Antibody) at dilution 1/20.