

## SCRN2 RABBIT PAB

**Cat.#:** S218879

**Product Name:** Anti-SCRN2 Rabbit Polyclonal Antibody

**Synonyms:** Ses2

**UNIPROT ID:** Q96FV2 (Gene Accession - BC017317)

**Background:** SCRN genes encode protein members of the secernin family including Secernin 1, Secernin 2 and Secernin 3. Function of Secernin 2 and Secernin 3 are so far not well understood. Secernin 1 is a novel 50-kDa cytosolic protein that appears to be involved in the regulation of exocytosis from peritoneal mast cells. Secernin-1 a novel tumor-associated antigen (TAA) and may be a universal marker of different cancer types including gastric cancer, which has been validated by several researches. Measurement of SCRNI can be used in the early detection of cancer or in the surveillance of patients who undergo surgery.

**Immunogen:** Fusion protein of human SCRN2

**Applications:** ELISA, WB, IHC

**Recommended Dilutions:** IHC: 50-300;WB: 500-2000;ELISA: 5000-10000

**Host Species:** Rabbit

**Clonality:** Rabbit Polyclonal

**Isotype:** Immunogen-specific rabbit IgG

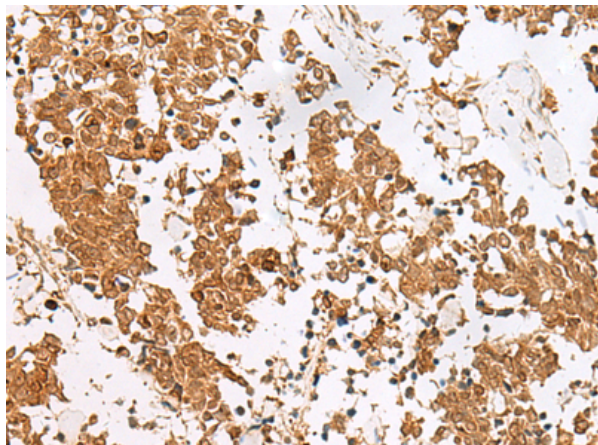
**Purification:** Antigen affinity purification

**Species Reactivity:** Human, Mouse, Rat

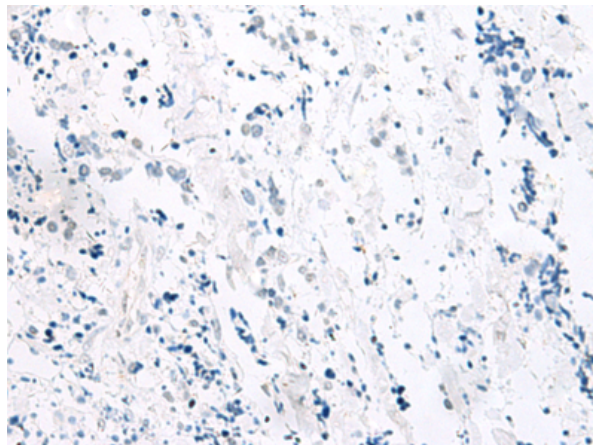
**Constituents:** PBS (without Mg<sup>2+</sup> and Ca<sup>2+</sup>), pH 7.4, 150 mM NaCl, 0.05% Sodium Azide and 40% glycerol

**Research Areas:** Cell Biology

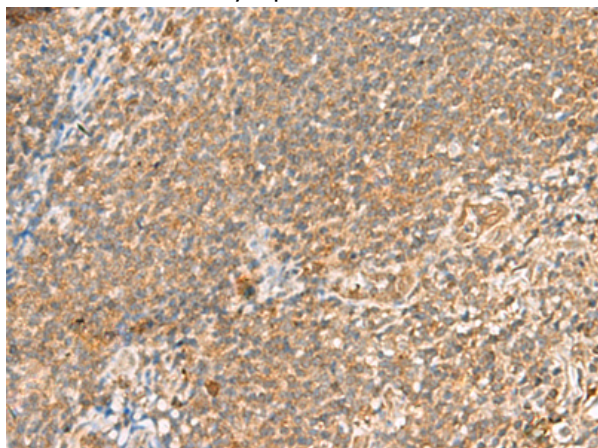
**Storage & Shipping:** Store at -20°C. Avoid repeated freezing and thawing



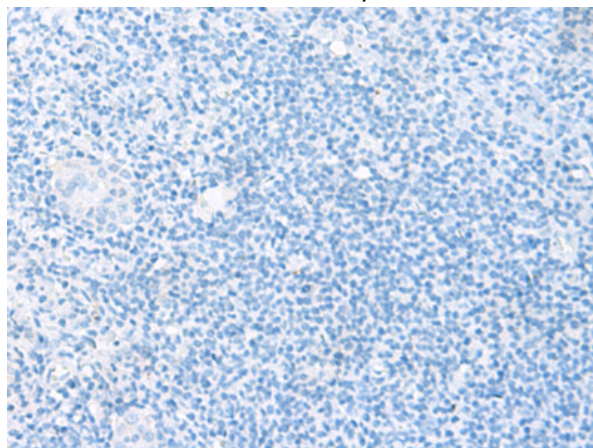
Immunohistochemistry analysis of paraffin embedded Human lung cancer tissue using 218879(SCRN2 Antibody) at a dilution of 1/60(Nucleus or Cytoplasm).



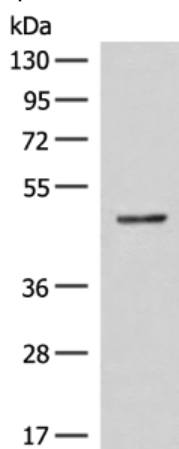
In comparison with the IHC on the left, the same paraffin-embedded Human lung cancer tissue is first treated with the fusion protein and then with 218879(Anti-SCRN2 Antibody) at dilution 1/60.



The image on the left is immunohistochemistry of paraffin-embedded Human tonsil tissue using 218879(Anti-SCRN2 Antibody) at a dilution of 1/60.



In comparison with the IHC on the left, the same paraffin-embedded Human tonsil tissue is first treated with fusion protein and then with D225426(Anti-SCRN2 Antibody) at dilution 1/60.



Gel: 8%SDS-PAGE, Lysate: 40 µg;  
Lane: Mouse small intestines tissue lysate;  
Primary antibody: 218879(SCRN2 Antibody) at dilution 1/400;  
Secondary antibody: Goat anti rabbit IgG at 1/8000 dilution;  
Exposure time: 10 seconds



# Product Description

Pioneering GTPase and Oncogene Product Development since 2010

---