

SDHA RABBIT MAB

Cat.#: N262876

Product Name: Anti-SDHA Rabbit Monoclonal Antibody

Synonyms: SDHA; SDH2; SDHF; Succinate dehydrogenase [ubiquinone] flavoprotein subunit; mitochondrial; Flavoprotein subunit of complex II; Fp

UNIPROT ID: P31040

Background: Flavoprotein (FP) subunit of succinate dehydrogenase (SDH) that is involved in complex II of the mitochondrial electron transport chain and is responsible for transferring electrons from succinate to ubiquinone.

Immunogen: A synthetic peptide of human SDHA

Applications: WB,IHC-F,IHC-P,ICC/IF,IP

Recommended Dilutions: WB: 1/500-1/1000 IHC: 1/50-1/100 IF: 1/50-1/200 IP: 1/20

Host Species: Rabbit

Clonality: Rabbit Monoclonal

Clone ID: R09-5K6

MW: Calculated MW: 73 kDa; Observed MW: 73 kDa

Isotype: IgG

Purification: Affinity Purified

Species Reactivity: Human,Mouse,Rat

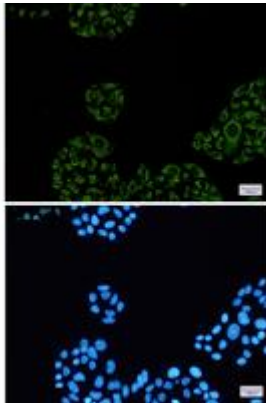
Conjugation: Unconjugated

Modification: Unmodified

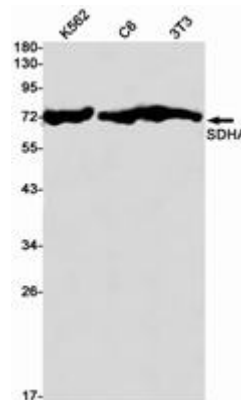
Constituents: PBS (without Mg²⁺ and Ca²⁺), pH 7.3 containing 50% glycerol, 0.5% BSA and 0.02% sodium azide

Research Areas: Tags & Cell Markers

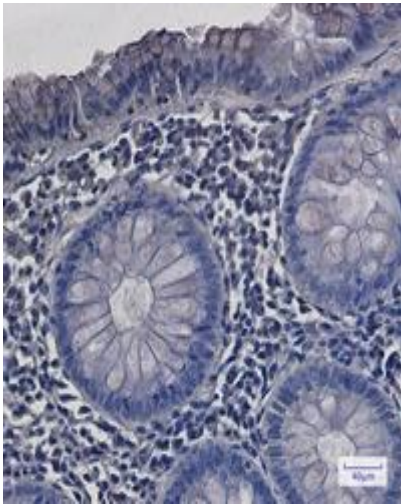
Storage & Shipping: Store at -20°C. Avoid repeated freezing and thawing



Immunocytochemistry analysis of SDHA (green) in HeLa using SDHA antibody, and DAPI (blue)



Western blot analysis of SDHA in K562, C6, 3T3 lysates using SDHA antibody.



Immunohistochemistry analysis of paraffin-embedded Human colon cancer using SDHA antibody. High-pressure and temperature Sodium Citrate pH 6.0 was used for antigen retrieval.