

SEC11A RABBIT PAB

Cat.#: S212522

Product Name: Anti-SEC11A Rabbit Polyclonal Antibody

Synonyms: SPC18; SPCS4A; SEC11L1; sid2895; 1810012E07Rik

UNIPROT ID: P67812 (Gene Accession - BC014508)

Background: This gene encodes a member of the peptidase S26B family. The encoded protein is an 18kDa subunit of the signal peptidase complex and has been linked to cell migration and invasion, gastric cancer and lymph node metastasis. Alternative splicing results in multiple transcript variants. A related pseudogene has been identified on chromosome 8.

Immunogen: Fusion protein of human SEC11A

Applications: ELISA, WB, IHC

Recommended Dilutions: IHC: 40-200;WB: 500-2000;ELISA: 5000-10000

Host Species: Rabbit

Clonality: Rabbit Polyclonal

Isotype: Immunogen-specific rabbit IgG

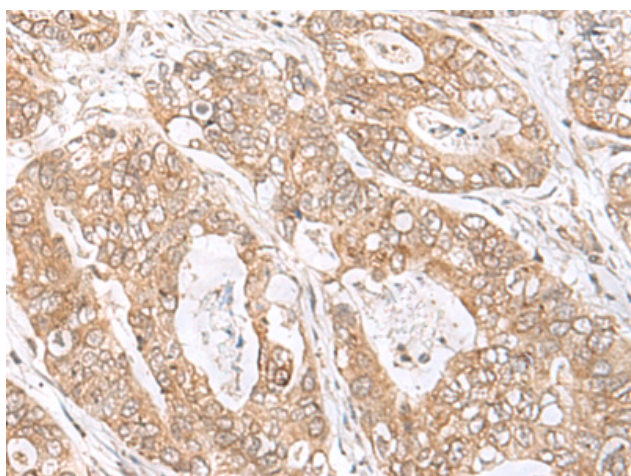
Purification: Antigen affinity purification

Species Reactivity: Human, Mouse, Rat

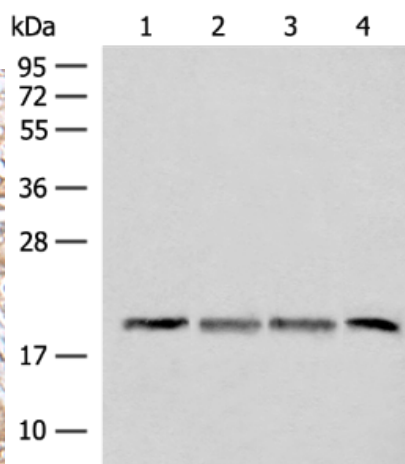
Constituents: PBS (without Mg²⁺ and Ca²⁺), pH 7.4, 150 mM NaCl, 0.05% Sodium Azide and 40% glycerol

Research Areas: Cell Biology

Storage & Shipping: Store at -20°C. Avoid repeated freezing and thawing



Immunohistochemistry analysis of paraffin-embedded Human gastric cancer tissue using 212522(SEC11A Antibody) at a dilution of 1/45(Cell membrane).



Gel: 12%SDS-PAGE, Lysate: 40 µg;
Lane 1-4: TM4, HEPG2 and A549 cell, Mouse liver tissue lysates;
Primary antibody: 212522(SEC11A Antibody) at dilution 1/300;
Secondary antibody: Goat anti rabbit IgG at 1/8000 dilution;
Exposure time: 3 seconds