

SEH1L RABBIT MAB

Cat.#: N262880

Product Name: Anti-SEH1L Rabbit Monoclonal Antibody

Synonyms: GATOR complex protein SEH1; Nup107-160 subcomplex subunit SEH1

UNIPROT ID: Q8R2U0

Background: Component of the Nup107-160 subcomplex of the nuclear pore complex (NPC). The Nup107-160 subcomplex is required for the assembly of a functional NPC. The Nup107-160 subcomplex is also required for normal kinetochore microtubule attachment, mitotic progression and chromosome segregation. This subunit plays a role in recruitment of the Nup107-160 subcomplex to the kinetochore.

Immunogen: A synthetic peptide of mouse SEH1L

Applications: WB,IP

Recommended Dilutions: WB: 1/500-1/1000 IP: 1/20

Host Species: Rabbit

Clonality: Rabbit Monoclonal

Clone ID: R03-9E2

MW: Calculated MW: 40 kDa; Observed MW: 40 kDa

Isotype: IgG

Purification: Affinity Purified

Species Reactivity: Human,Mouse,Rat

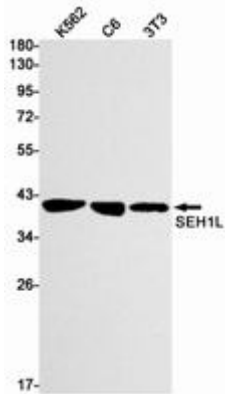
Conjugation: Unconjugated

Modification: Unmodified

Constituents: PBS (without Mg²⁺ and Ca²⁺), pH 7.3 containing 50% glycerol, 0.5% BSA and 0.02% sodium azide

Research Areas: Epigenetics and Nuclear Signaling

Storage & Shipping: Store at -20°C. Avoid repeated freezing and thawing



Western blot analysis of SEH1L in K562, C6, 3T3 lysates using SEH1L antibody.