

## SEMA3C RABBIT PAB

**Cat.#:** S216772

**Product Name:** Anti-SEMA3C Rabbit Polyclonal Antibody

**Synonyms:** SemE; SEMAE

**UNIPROT ID:** Q99985 (Gene Accession - BC030690 )

**Background:** This gene encodes a secreted glycoprotein that belongs to the semaphorin class 3 family of neuronal guidance cues. The encoded protein contains an N-terminal sema domain, integrin and immunoglobulin-like domains, and a C-terminal basic domain. Homodimerization and proteolytic cleavage of the C-terminal propeptide are necessary for the function of the encoded protein. It binds a neuropilin co-receptor before forming a heterotrimeric complex with an associated plexin. An increase in the expression of this gene correlates with an increase in cancer cell invasion and adhesion. Naturally occurring mutations in this gene are associated with Hirschsprung disease.

**Immunogen:** Fusion protein of human SEMA3C

**Applications:** ELISA, IHC

**Recommended Dilutions:** IHC: 50-200; ELISA: 5000-10000

**Host Species:** Rabbit

**Clonality:** Rabbit Polyclonal

**Isotype:** Immunogen-specific rabbit IgG

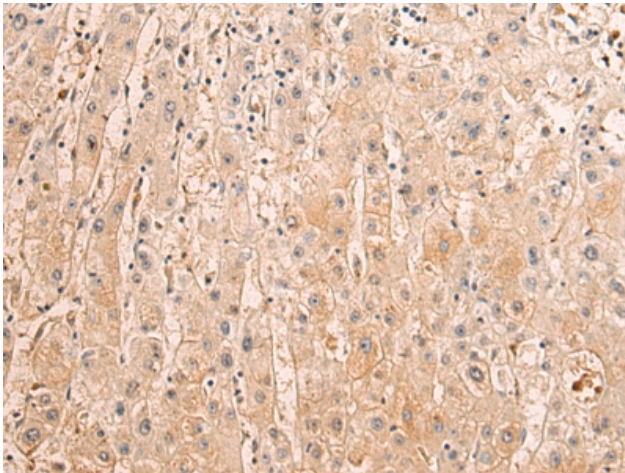
**Purification:** Antigen affinity purification

**Species Reactivity:** Human, Mouse

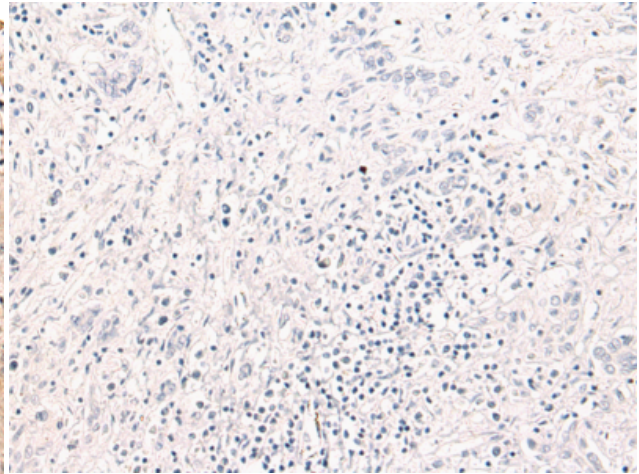
**Constituents:** PBS (without Mg<sup>2+</sup> and Ca<sup>2+</sup>), pH 7.4, 150 mM NaCl, 0.05% Sodium Azide and 40% glycerol

**Research Areas:** Neuroscience, Cardiovascular

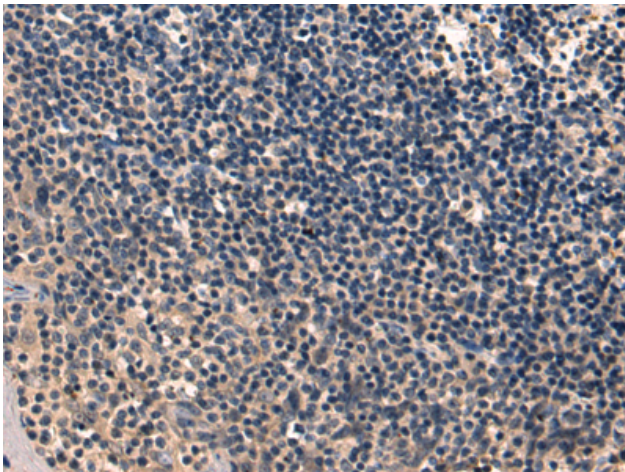
**Storage & Shipping:** Store at -20°C. Avoid repeated freezing and thawing



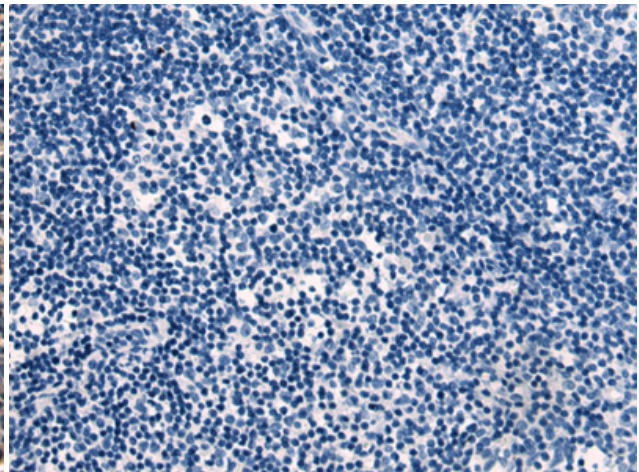
Immunohistochemistry analysis of paraffin embedded Human liver cancer tissue using 216772 (SEMA3C Antibody) at a dilution of 1/105 (Secreted).



In comparison with the IHC on the left, the same paraffin-embedded Human liver cancer tissue is first treated with the fusion protein and then with 216772 (Anti-SEMA3C Antibody) at dilution 1/105.



The image on the left is immunohistochemistry of paraffin-embedded Human tonsil tissue using 216772 (Anti-SEMA3C Antibody) at a dilution of 1/105.



In comparison with the IHC on the left, the same paraffin-embedded Human tonsil tissue is first treated with fusion protein and then with D221210 (Anti-SEMA3C Antibody) at dilution 1/105.