

SEMA3D RABBIT PAB

Cat.#: S220197

Product Name: Anti-SEMA3D Rabbit Polyclonal Antibody

Synonyms: coll-2; Sema-Z2

UNIPROT ID: O95025 (Gene Accession - NP_689967.2)

Background: This gene belongs to the semaphorin family. It induces the collapse and paralysis of neuronal growth cones. It could potentially act as repulsive cues toward specific neuronal populations. Strong binding to neuropilin is mediated by the carboxy third of the protein.

Immunogen: Synthetic peptide of human SEMA3D

Applications: ELISA, IHC

Recommended Dilutions: IHC: 50-200; ELISA: 2000-5000

Host Species: Rabbit

Clonality: Rabbit Polyclonal

Isotype: Immunogen-specific rabbit IgG

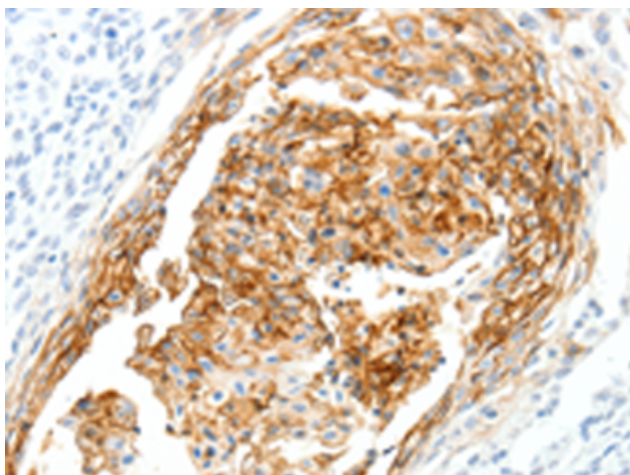
Purification: Antigen affinity purification

Species Reactivity: Human, Mouse

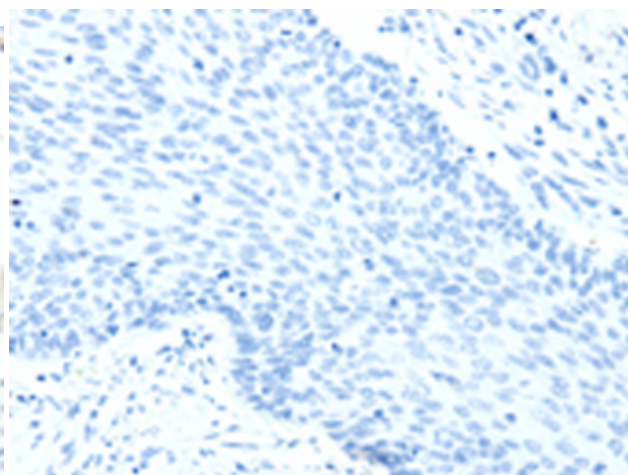
Constituents: PBS (without Mg²⁺ and Ca²⁺), pH 7.4, 150 mM NaCl, 0.05% Sodium Azide and 40% glycerol

Research Areas: Neuroscience

Storage & Shipping: Store at -20°C. Avoid repeated freezing and thawing



Immunohistochemistry analysis of paraffin embedded Human cervical cancer tissue using 220197(SEMA3D Antibody) at a dilution of 1/40(Cytoplasm, Cell membrane).



In comparison with the IHC on the left, the same paraffin-embedded Human cervical cancer tissue is first treated with the synthetic peptide and then with 220197(Anti-SEMA3D Antibody) at dilution 1/40.