

SEMA3G RABBIT PAB

Cat.#: S216773

Product Name: Anti-SEMA3G Rabbit Polyclonal Antibody

Synonyms: sem2

UNIPROT ID: Q9NS98 (Gene Accession - BC098137)

Background: The transcription of this gene is activated by PPAR-gamma, and the resulting protein product plays a role in endothelial cell migration. Expression of this gene also inhibits tumor cell migration and invasion.

Immunogen: Fusion protein of human SEMA3G

Applications: ELISA, IHC

Recommended Dilutions: IHC: 50-200; ELISA: 5000-10000

Host Species: Rabbit

Clonality: Rabbit Polyclonal

Isotype: Immunogen-specific rabbit IgG

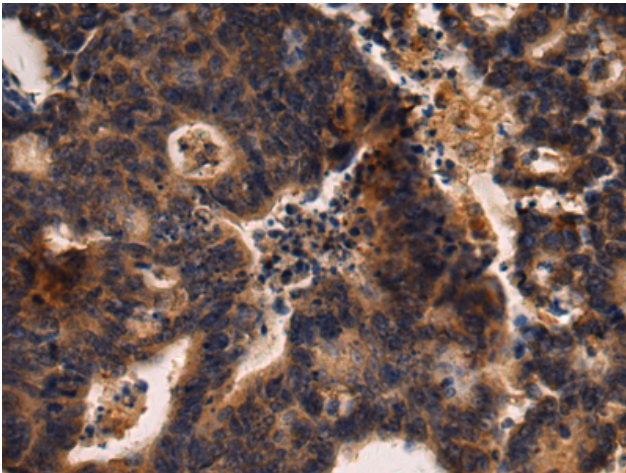
Purification: Antigen affinity purification

Species Reactivity: Human

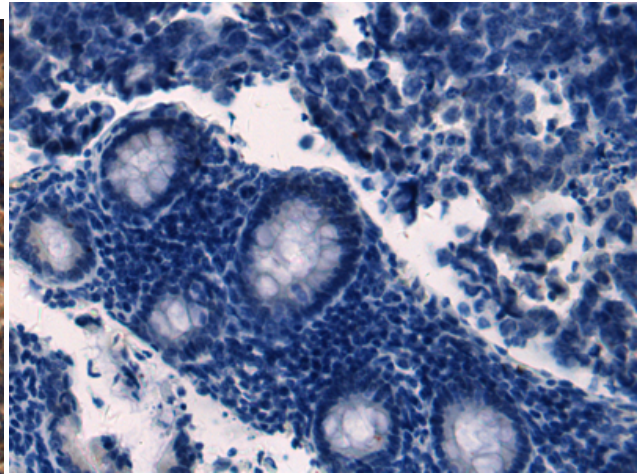
Constituents: PBS (without Mg²⁺ and Ca²⁺), pH 7.4, 150 mM NaCl, 0.05% Sodium Azide and 40% glycerol

Research Areas: Immunology

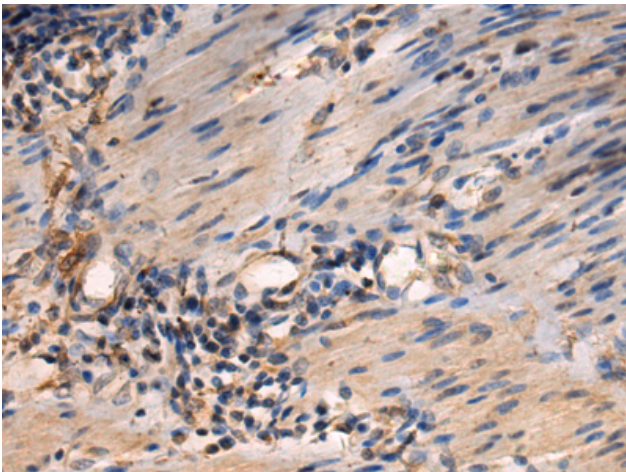
Storage & Shipping: Store at -20°C. Avoid repeated freezing and thawing



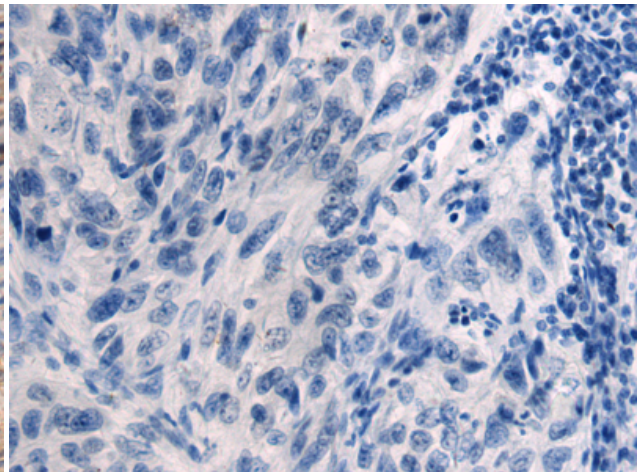
Immunohistochemistry analysis of paraffin-embedded Human colorectal cancer tissue using 216773 (SEMA3G Antibody) at a dilution of 1/70 (Secreted).



In comparison with the IHC on the left, the same paraffin-embedded Human colorectal cancer tissue is first treated with the fusion protein and then with 216773 (Anti-SEMA3G Antibody) at dilution 1/70.



The image on the left is immunohistochemistry of paraffin-embedded Human esophagus cancer tissue using 216773 (Anti-SEMA3G Antibody) at a dilution of 1/70.



In comparison with the IHC on the left, the same paraffin-embedded Human esophagus cancer tissue is first treated with fusion protein and then with D221212 (Anti-SEMA3G Antibody) at dilution 1/70.