

SEMA6A RABBIT PAB

Cat.#: S220892

Product Name: Anti-SEMA6A Rabbit Polyclonal Antibody

Synonyms: VIA; SEMA; HT018; SEMAQ; SEMA6A1

UNIPROT ID: Q9H2E6 (Gene Accession - NP_065847)

Background: Predicted to enable identical protein binding activity; signaling receptor binding activity; and transmembrane signaling receptor activity. Involved in cellular response to vascular endothelial growth factor stimulus; negative regulation of cell adhesion involved in sprouting angiogenesis; and negative regulation of signal transduction. Predicted to be integral component of membrane. Predicted to be active in extracellular space. Predicted to be integral component of plasma membrane.

Immunogen: Synthetic peptide of human SEMA6A

Applications: ELISA, WB, IHC

Recommended Dilutions: IHC: 50-100;WB: 1000-5000;ELISA: 5000-10000

Host Species: Rabbit

Clonality: Rabbit Polyclonal

Isotype: Immunogen-specific rabbit IgG

Purification: Antigen affinity purification

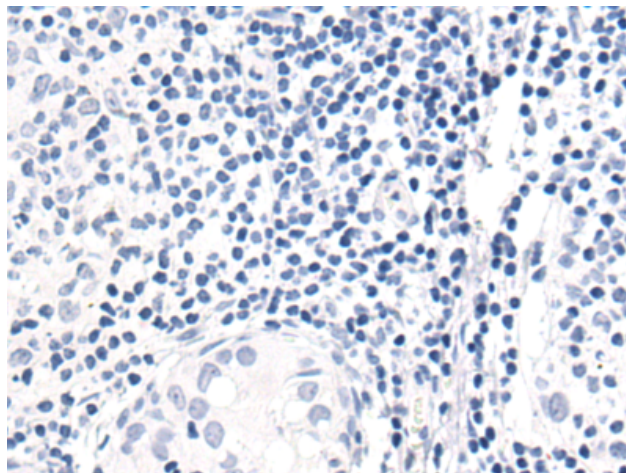
Species Reactivity: Human, Mouse

Constituents: PBS (without Mg²⁺ and Ca²⁺), pH 7.4, 150 mM NaCl, 0.05% Sodium Azide and 40% glycerol

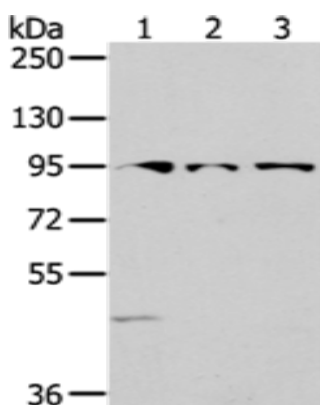
Research Areas: Neuroscience

Storage & Shipping: Store at -20°C. Avoid repeated freezing and thawing

✘ Immunohistochemistry analysis of paraffin embedded Human thyroid cancer tissue using 220892(SEMA6A Antibody) at a dilution of 1/50(Cytoplasm).



In comparison with the IHC on the left, the same paraffin-embedded Human thyroid cancer tissue is first treated with the synthetic peptide and then with 220892(Anti-SEMA6A Antibody) at dilution 1/50.



Gel: 6%SDS-PAGE, Lysate: 40 μ g;
Lane: Mouse brain tissue lysate;
Primary antibody: 220892(SEMA6A Antibody)
at dilution 1/1500;
Secondary antibody: HRP-conjugated Goat
anti rabbit IgG at 1/5000 dilution;
Exposure time: 15 seconds