

SEMA7A RABBIT PAB

Cat.#: S220894

Product Name: Anti-SEMA7A Rabbit Polyclonal Antibody

Synonyms: JMH; CD108; SEMAL; CDw108; SEMAK1; H-Sema-L; H-SEMA-K1

UNIPROT ID: O75326 (Gene Accession - NP_001139501)

Background: The protein encoded by this gene binds to cell surfaces through a glycosylphosphatidylinositol (GPI) linkage. The encoded glycoprotein is found on activated lymphocytes and erythrocytes. This protein may be involved in immunomodulatory and neuronal processes. Defects in this gene can result in loss of bone mineral density (BMD). Three transcript variants encoding different isoforms have been found for this gene.

Immunogen: Synthetic peptide of human SEMA7A

Applications: ELISA, IHC

Recommended Dilutions: IHC: 25-100; ELISA: 1000-2000

Host Species: Rabbit

Clonality: Rabbit Polyclonal

Isotype: Immunogen-specific rabbit IgG

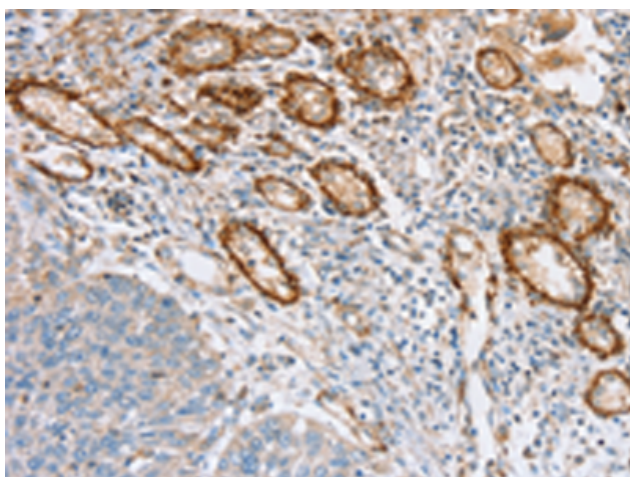
Purification: Antigen affinity purification

Species Reactivity: Human, Mouse

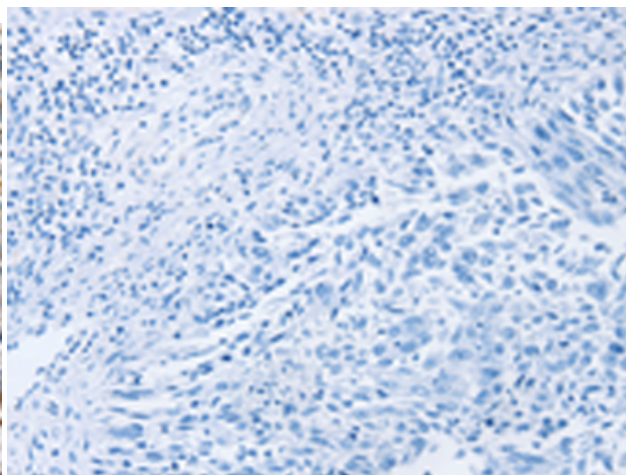
Constituents: PBS (without Mg²⁺ and Ca²⁺), pH 7.4, 150 mM NaCl, 0.05% Sodium Azide and 40% glycerol

Research Areas: Neuroscience, Cardiovascular, Immunology

Storage & Shipping: Store at -20°C. Avoid repeated freezing and thawing



Immunohistochemistry analysis of paraffin embedded Human lung cancer tissue using 220894 (SEMA7A Antibody) at a dilution of 1/35 (Cytoplasm or Cell membrane).



In comparison with the IHC on the left, the same paraffin-embedded Human lung cancer tissue is first treated with the synthetic peptide and then with 220894 (Anti-SEMA7A Antibody) at dilution 1/35.