

SEMAPHORIN 7A RABBIT MAB

Cat.#: N263543

Product Name: Anti-Semaphorin 7A Rabbit Monoclonal Antibody

Synonyms: JMH; CD108; SEMAL; CDw108; SEMAK1; H-Sema-L; H-SEMA-K1

UNIPROT ID: O75326

Background: Plays an important role in integrin-mediated signaling and functions both in regulating cell migration and immune responses.

Immunogen: Recombinant protein of human Semaphorin 7a

Applications: WB,IHC-P,IP

Recommended Dilutions: WB: 1/500-1/1000 IHC: 1/50-1/100 IP: 1/20

Host Species: Rabbit

Clonality: Rabbit Monoclonal

Clone ID: R01-0F8

MW: Calculated MW: 75 kDa; Observed MW: 75 kDa

Isotype: IgG

Purification: Affinity Purified

Species Reactivity: Human

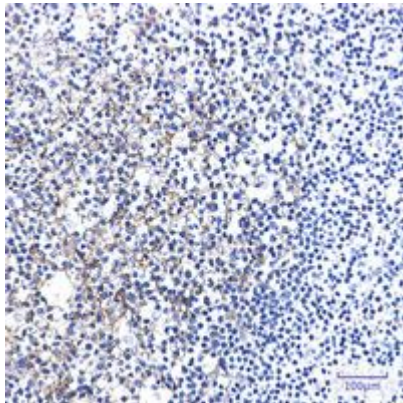
Conjugation: Unconjugated

Modification: Unmodified

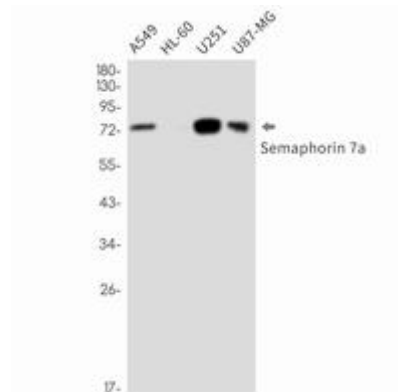
Constituents: PBS (without Mg²⁺ and Ca²⁺), pH 7.3 containing 50% glycerol, 0.5% BSA and 0.02% sodium azide

Research Areas: -

Storage & Shipping: Store at -20°C. Avoid repeated freezing and thawing



Immunohistochemistry analysis of paraffin-embedded Human tonsil using Semaphorin 7a antibody. High-pressure and temperature Sodium Citrate pH 6.0 was used for antigen retrieval.



Western blot analysis of Semaphorin 7a in A549, HL-60, U251, U87-MG lysates using Semaphorin 7A antibody.