

## SENP1 RABBIT PAB

**Cat.#:** N226025

**Product Name:** Anti-SENP1 Rabbit pAb

**Synonyms:** SENP1; SuPr2

**UNIPROT ID:** Q9P0U3

**Background:** Protease that catalyzes two essential functions in the SUMO pathway: processing of full-length SUMO1, SUMO2 and SUMO3 to their mature forms and deconjugation of SUMO1, SUMO2 and SUMO3 from targeted proteins.

**Immunogen:** A synthetic peptide of human SENP1

**Applications:** WB,IHC-F,IHC-P,ICC/IF,FC

**Recommended Dilutions:** WB: 1/500-1/1000 IHC: 1/50-1/100 IF: 1/50-1/200 FC: 1/50-1/100

**Host Species:** Rabbit

**Clonality:** Rabbit Polyclonal

**Clone ID:** -

**MW:** Calculated MW: 73 kDa; Observed MW: 76 kDa

**Isotype:** IgG

**Purification:** Affinity Purified

**Species Reactivity:** Human

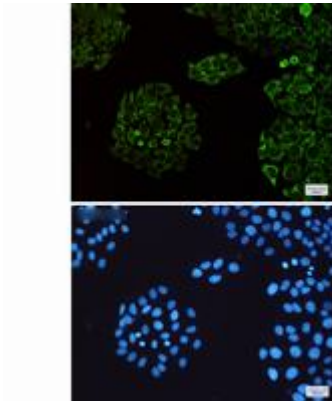
**Conjugation:** Unconjugated

**Modification:** Unmodified

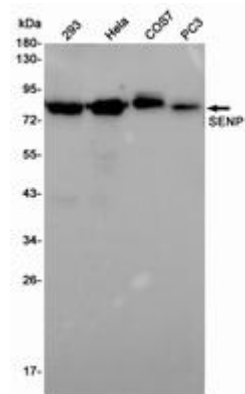
**Constituents:** PBS (without Mg<sup>2+</sup> and Ca<sup>2+</sup>), pH 7.3 containing 50% glycerol, 0.5% BSA and 0.02% sodium azide

**Research Areas:** Cell Biology

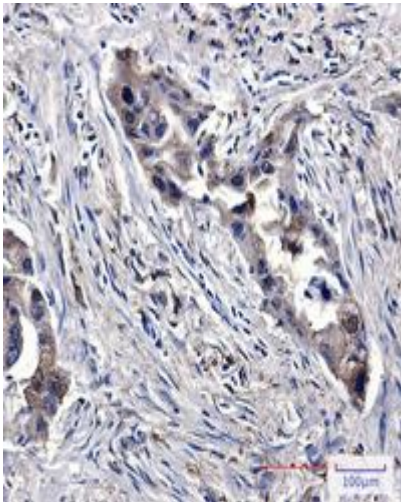
**Storage & Shipping:** Store at -20°C. Avoid repeated freezing and thawing



Immunocytochemistry analysis of SENP1 (green) in HeLa using SENP1 antibody, and DAPI (blue)



Western blot analysis of SENP1 in 293, HeLa, COS7, PC-3 lysates using SENP1 antibody.



Immunohistochemistry analysis of paraffin-embedded Human lung cancer using SENP1 antibody. High-pressure and temperature Sodium Citrate pH 6.0 was used for antigen retrieval.