

SEN3 RABBIT PAB**Cat.#:** N225492**Product Name:** Anti-SEN3 Rabbit pAb**Synonyms:** SSP3; Ulp1; SMT3IP1**UNIPROT ID:** Q9H4L4

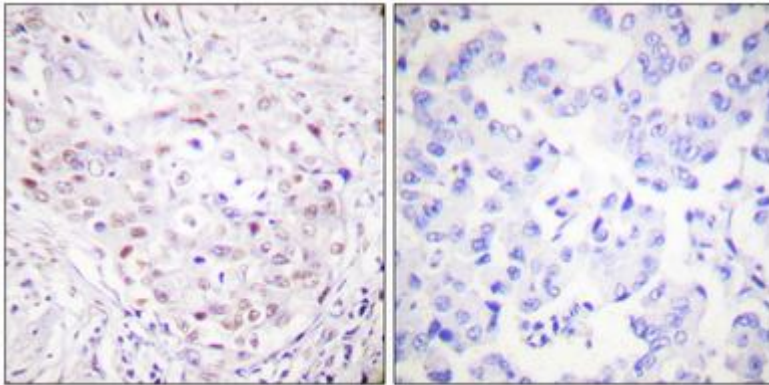
Background: The reversible posttranslational modification of proteins by the addition of small ubiquitin-like SUMO proteins (see SUMO1; MIM 601912) is required for numerous biologic processes. SUMO-specific proteases, such as SENP3, are responsible for the initial processing of SUMO precursors to generate a C-terminal diglycine motif required for the conjugation reaction.

Immunogen: The antiserum was produced against synthesized peptide derived from human SENP3. AA range:10-59

Applications: WB,IHC-P,ELISA**Recommended Dilutions:** WB: 1/500-1/1000 IHC: 1/50-1/100 ELISA: 1/10000**Host Species:** Rabbit**Clonality:** Rabbit Polyclonal**Clone ID:** -**MW:** Calculated MW: 65 kDa; Observed MW: 80 kDa**Isotype:** IgG**Purification:** Affinity Chromatography**Species Reactivity:** Human,Mouse**Conjugation:** Unconjugated**Modification:** Unmodified

Constituents: PBS (without Mg²⁺ and Ca²⁺), pH 7.3 containing 50% glycerol, 0.5% BSA and 0.02% sodium azide

Research Areas: Cell Biology**Storage & Shipping:** Store at -20°C. Avoid repeated freezing and thawing



Immunohistochemistry analysis of paraffin-embedded Human breast carcinoma tissue, using SENP3 antibody. High-pressure and temperature Sodium Citrate pH 6.0 was used for antigen retrieval. Sample with blocking peptide on the right.