

SEPHS1 RABBIT PAB

Cat.#: S219373

Product Name: Anti-SEPHS1 Rabbit Polyclonal Antibody

Synonyms: SPS; SELD; SPS1

UNIPROT ID: P49903 (Gene Accession - BC000941)

Background: This gene encodes an enzyme that synthesizes selenophosphate from selenide and ATP. Selenophosphate is the selenium donor used to synthesize selenocysteine, which is co-translationally incorporated into selenoproteins at in-frame UGA codons.

Immunogen: Fusion protein of human SEPHS1

Applications: ELISA, IHC

Recommended Dilutions: IHC: 50-200; ELISA: 5000-10000

Host Species: Rabbit

Clonality: Rabbit Polyclonal

Isotype: Immunogen-specific rabbit IgG

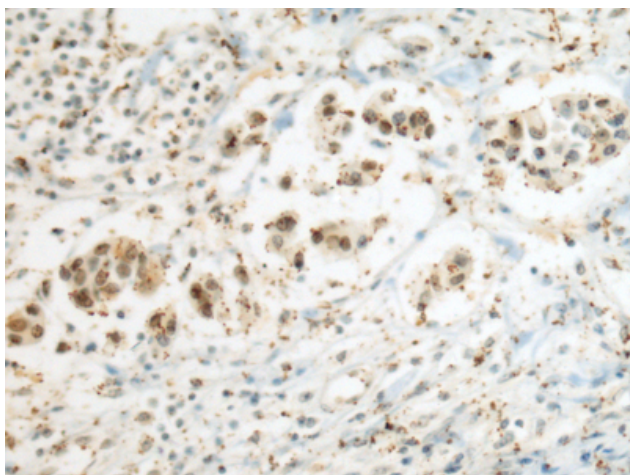
Purification: Antigen affinity purification

Species Reactivity: Human, Mouse

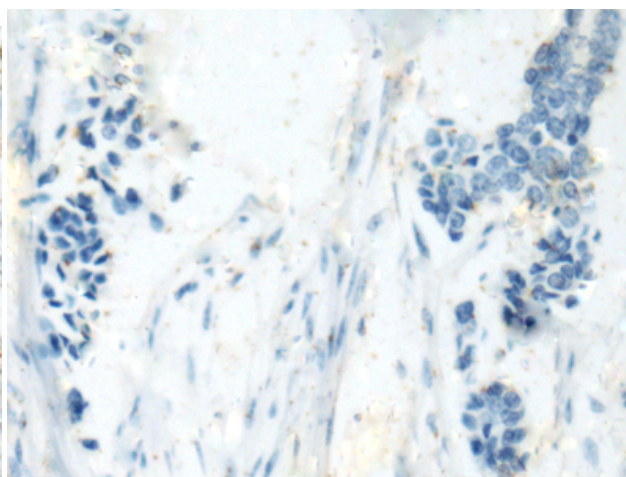
Constituents: PBS (without Mg²⁺ and Ca²⁺), pH 7.4, 150 mM NaCl, 0.05% Sodium Azide and 40% glycerol

Research Areas: Cell Biology

Storage & Shipping: Store at -20°C. Avoid repeated freezing and thawing



Immunohistochemistry analysis of paraffin embedded Human breast cancer tissue using 219373(SEPHS1 Antibody) at a dilution of 1/80(Nucleus).



In comparison with the IHC on the left, the same paraffin-embedded Human breast cancer tissue is first treated with the fusion protein and then with 219373(Anti-SEPHS1 Antibody) at dilution 1/80.