

SEPTIN 7 RABBIT MAB

Cat.#: N262883

Product Name: Anti-Septin 7 Rabbit Monoclonal Antibody

Synonyms: septin 7; CDC3; CDC10; SEPT7; SEPT7A; NBLA02942

UNIPROT ID: Q16181

Background: Filament-forming cytoskeletal GTPase. Required for normal organization of the actin cytoskeleton. Required for normal progress through mitosis. Involved in cytokinesis. Required for normal association of CENPE with the kinetochore. Plays a role in ciliogenesis and collective cell movements. Forms a filamentous structure with SEPT12, SEPT6, SEPT2 and probably SEPT4 at the sperm annulus which is required for the structural integrity and motility of the sperm tail during postmeiotic differentiation (PubMed:25588830).

Immunogen: Recombinant protein of human SEPT7

Applications: WB, ICC/IF

Recommended Dilutions: WB: 1/500-1/1000 IF: 1/50-1/200

Host Species: Rabbit

Clonality: Rabbit Monoclonal

Clone ID: R09-6A1

MW: Calculated MW: 51 kDa; Observed MW: 51 kDa

Isotype: IgG

Purification: Affinity Purified

Species Reactivity: Human, Mouse, Rat

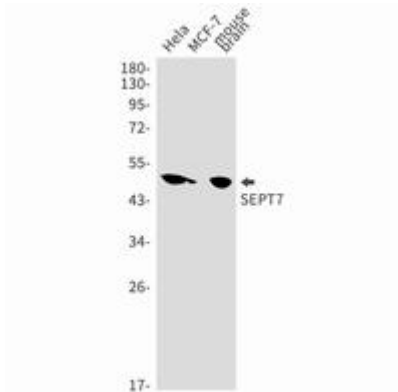
Conjugation: Unconjugated

Modification: Unmodified

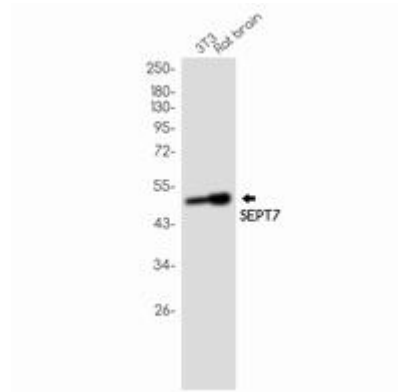
Constituents: PBS (without Mg²⁺ and Ca²⁺), pH 7.3 containing 50% glycerol, 0.5% BSA and 0.02% sodium azide

Research Areas: Tags & Cell Markers

Storage & Shipping: Store at -20°C. Avoid repeated freezing and thawing



Western blot analysis of SEPT7 in HeLa, MCF-7, mouse brain lysates using SEPT7 antibody.



Western blot analysis of SEPT7 in 3T3, rat brain lysates using Septin 7 antibody.