

## SERCA2 ATPASE RABBIT MAB

**Cat.#:** N262884

**Product Name:** Anti-SERCA2 ATPase Rabbit Monoclonal Antibody

**Synonyms:** ATP2A2; ATP2B; Sarcoplasmic/endoplasmic reticulum calcium ATPase 2; SERCA2; SR Ca(2+)-ATPase 2; Calcium pump 2; Calcium-transporting ATPase sarcoplasmic reticulum type; slow twitch skeletal muscle isoform; Endoplasmic reticulum class 1/2 Ca(2+) ATPase

**UNIPROT ID:** P16615

**Background:** This magnesium-dependent enzyme catalyzes the hydrolysis of ATP coupled with the translocation of calcium from the cytosol to the sarcoplasmic reticulum lumen. Isoform 2 is involved in the regulation of the contraction/relaxation cycle.

**Immunogen:** A synthetic peptide of human SERCA2 ATPase

**Applications:** WB,IHC-F,IHC-P,ICC/IF

**Recommended Dilutions:** WB: 1/500-1/1000 IHC: 1/50-1/100 IF: 1/50-1/200

**Host Species:** Rabbit

**Clonality:** Rabbit Monoclonal

**Clone ID:** R09-1G2

**MW:** Calculated MW: 115 kDa; Observed MW: 115 kDa

**Isotype:** IgG

**Purification:** Affinity Purified

**Species Reactivity:** Human,Rat

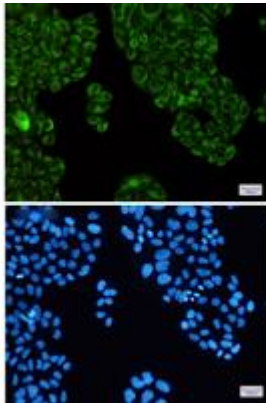
**Conjugation:** Unconjugated

**Modification:** Unmodified

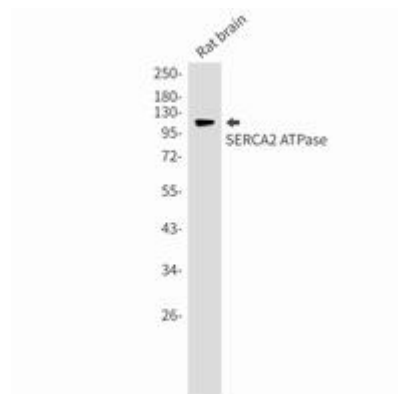
**Constituents:** PBS (without Mg<sup>2+</sup> and Ca<sup>2+</sup>), pH 7.3 containing 50% glycerol, 0.5% BSA and 0.02% sodium azide

**Research Areas:** Neuroscience

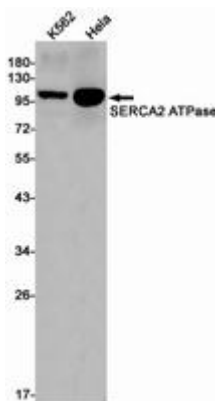
**Storage & Shipping:** Store at -20°C. Avoid repeated freezing and thawing



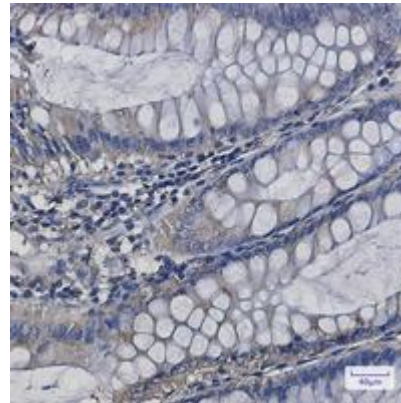
Immunocytochemistry analysis of SERCA2 ATPase (green) in Hela using SERCA2 ATPase antibody, and DAPI (blue)



Western blot analysis of SERCA2 ATPase in rat brain lysates using SERCA2 ATPase antibody.



Western blot analysis of SERCA2 ATPase in K562, Hela lysates using SERCA2 ATPase antibody.



Immunohistochemistry analysis of paraffin-embedded Human colon cancer using SERCA2 ATPase antibody. High-pressure and temperature Sodium Citrate pH 6.0 was used for antigen retrieval.