

## SERINC1 RABBIT PAB

**Cat.#:** S220898

**Product Name:** Anti-SERINC1 Rabbit Polyclonal Antibody

**Synonyms:** TDE2; TMS2; TDE1L; TMS-2

**UNIPROT ID:** Q9NRX5 (Gene Accession - NP\_065806 )

**Background:** Serine incorporator 1 is a protein that in humans is encoded by the SERINC1 gene. Enhances the incorporation of serine into phosphatidylserine and sphingolipids. Interacts with SPTLC1.

**Immunogen:** Synthetic peptide of human SERINC1

**Applications:** ELISA, IHC

**Recommended Dilutions:** IHC: 25-100; ELISA: 1000-2000

**Host Species:** Rabbit

**Clonality:** Rabbit Polyclonal

**Isotype:** Immunogen-specific rabbit IgG

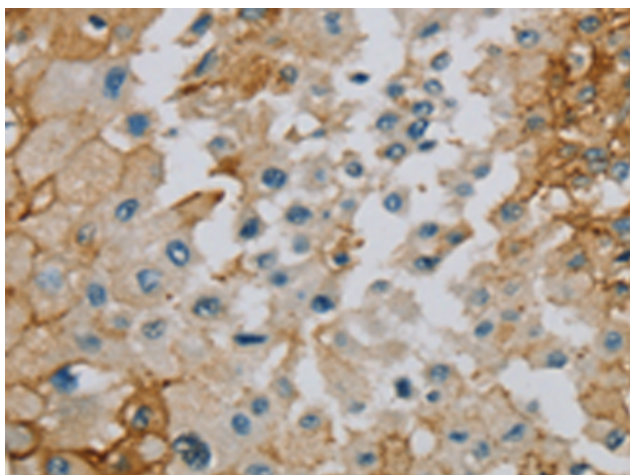
**Purification:** Antigen affinity purification

**Species Reactivity:** Human

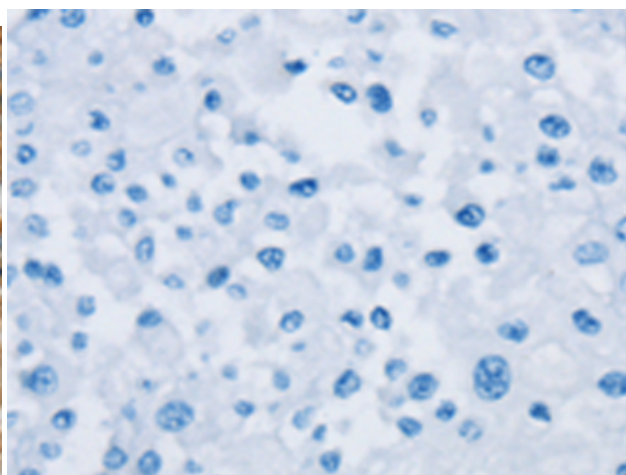
**Constituents:** PBS (without Mg<sup>2+</sup> and Ca<sup>2+</sup>), pH 7.4, 150 mM NaCl, 0.05% Sodium Azide and 40% glycerol

**Research Areas:** Metabolism

**Storage & Shipping:** Store at -20°C. Avoid repeated freezing and thawing



Immunohistochemistry analysis of paraffin embedded Human prostate cancer tissue using 220898(SERINC1 Antibody) at a dilution of 1/40(Cytoplasm).



In comparison with the IHC on the left, the same paraffin-embedded Human prostate cancer tissue is first treated with the synthetic peptide and then with 220898(Anti-SERINC1 Antibody) at dilution 1/40.