

SERPINA9 RABBIT PAB

Cat.#: S220344

Product Name: Anti-SERPINA9 Rabbit Polyclonal Antibody

Synonyms: GCET1; SERPINA11; SERPINA11b

UNIPROT ID: Q86WD7 (Gene Accession - NP_001035983)

Background: Serpin A9 also known as centerin or GCET1 is a protein that in humans is encoded by the SERPINA9 gene located on chromosome 14q32.1.[1] Serpin A9 is a member of the serpin family of serine protease inhibitors. The expression of SERPINA9 is restricted to germinal center B cells and lymphoid malignancies. SERPINA9 is likely to function in vivo in the germinal center as an efficient inhibitor of trypsin-like proteases. Highly expressed in normal germinal center (GC) B-cells and GC B-cell-derived malignancies.

Immunogen: Synthetic peptide of human SERPINA9

Applications: ELISA, WB, IHC

Recommended Dilutions: IHC: 25-100;WB: 500-2000;ELISA: 2000-5000

Host Species: Rabbit

Clonality: Rabbit Polyclonal

Isotype: Immunogen-specific rabbit IgG

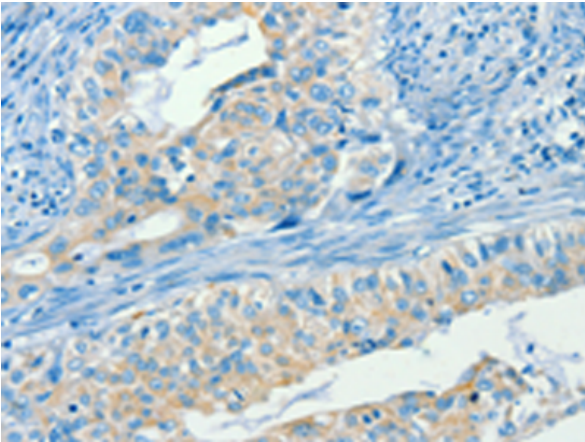
Purification: Antigen affinity purification

Species Reactivity: Human

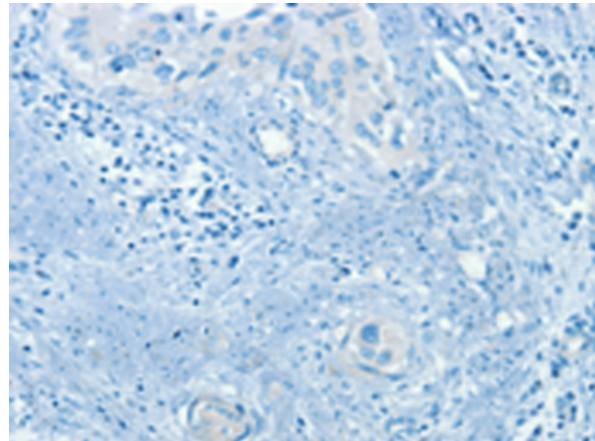
Constituents: PBS (without Mg²⁺ and Ca²⁺), pH 7.4, 150 mM NaCl, 0.05% Sodium Azide and 40% glycerol

Research Areas: Cancer, Cell Biology, Immunology

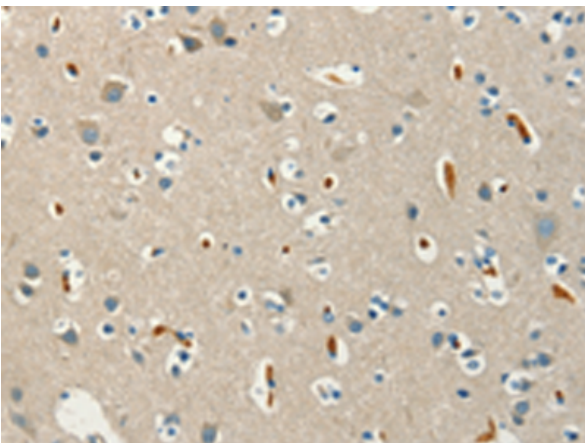
Storage & Shipping: Store at -20°C. Avoid repeated freezing and thawing



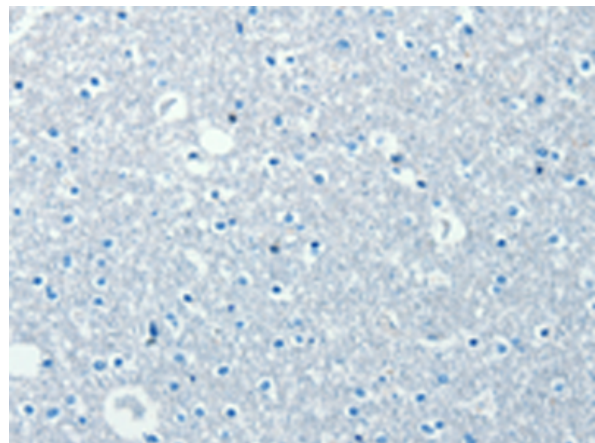
Immunohistochemistry analysis of paraffin embedded Human cervical cancer tissue using 220344(SERPINA9 Antibody) at a dilution of 1/60(Cytoplasm).



In comparison with the IHC on the left, the same paraffin-embedded Human cervical cancer tissue is first treated with the synthetic peptide and then with 220344(Anti-SERPINA9 Antibody) at dilution 1/60.



The image on the left is immunohistochemistry of paraffin-embedded Human brain tissue using 220344(Anti-SERPINA9 Antibody) at a dilution of 1/60.



In comparison with the IHC on the left, the same paraffin-embedded Human brain tissue is first treated with synthetic peptide and then with D261394(Anti-SERPINA9 Antibody) at dilution 1/60.



Gel: 8%SDS-PAGE, Lysate: 40 µg;
Lane 1-4: 293T cells, 231 cells, U937 cells, Raji cells;
Primary antibody: 220344(SERPINA9 Antibody) at dilution 1/337.5;
Secondary antibody: Goat anti rabbit IgG at 1/8000 dilution;
Exposure time: 10 seconds



Product Description

Pioneering GTPase and Oncogene Product Development since 2010
