

SERPINA9 RABBIT PAB

Cat.#: S222072

Product Name: Anti-SERPINA9 Rabbit Polyclonal Antibody

Synonyms: GCET1; SERPINA11; SERPINA11b

UNIPROT ID: Q86WD7 (Gene Accession - NP_001271204)

Background: Protease inhibitor that inhibits trypsin and trypsin-like serine proteases (in vitro). Inhibits plasmin and thrombin with lower efficiency (in vitro).

Immunogen: Synthetic peptide of human SERPINA9

Applications: ELISA, WB, IHC

Recommended Dilutions: IHC: 20-100;WB: 200-1000;ELISA: 5000-10000

Host Species: Rabbit

Clonality: Rabbit Polyclonal

Isotype: Immunogen-specific rabbit IgG

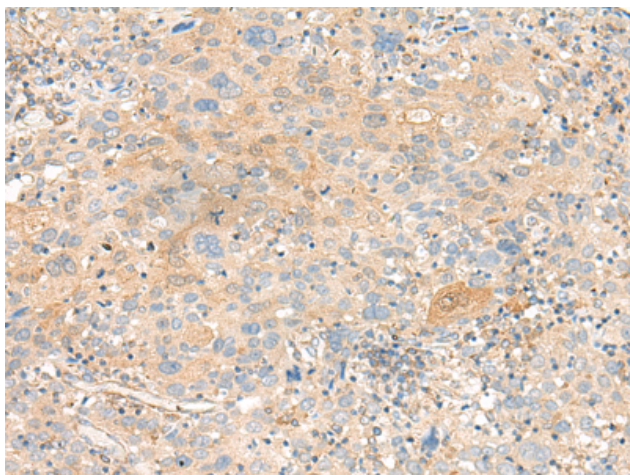
Purification: Antigen affinity purification

Species Reactivity: Human

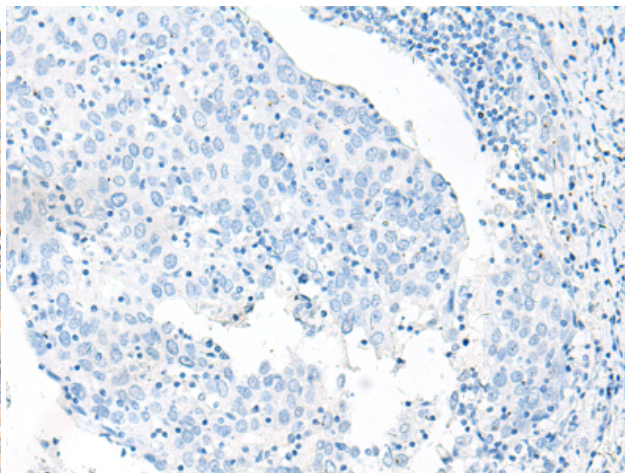
Constituents: PBS (without Mg²⁺ and Ca²⁺), pH 7.4, 150 mM NaCl, 0.05% Sodium Azide and 40% glycerol

Research Areas: Cancer, Cell Biology, Immunology

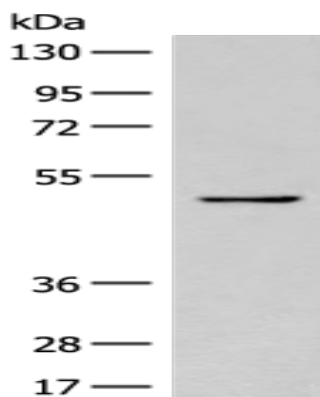
Storage & Shipping: Store at -20°C. Avoid repeated freezing and thawing



Immunohistochemistry analysis of paraffin embedded Human cervical cancer tissue using 222072(SERPINA9 Antibody) at a dilution of 1/20(Cytoplasm).



In comparison with the IHC on the left, the same paraffin-embedded Human cervical cancer tissue is first treated with the synthetic peptide and then with 222072(Anti-SERPINA9 Antibody) at dilution 1/20.



Gel: 8%SDS-PAGE, Lysate: 40 μ g;
Lane: Raji cell lysate;
Primary antibody: 222072(SERPINA9 Antibody) at dilution 1/200;
Secondary antibody: Goat anti rabbit IgG at 1/8000 dilution;
Exposure time: 1 minute