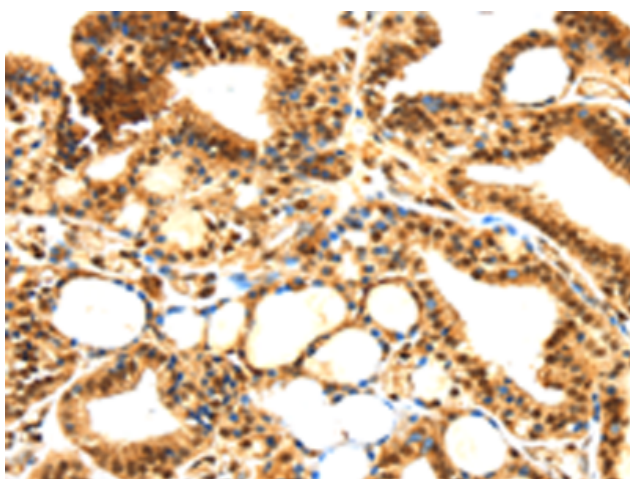
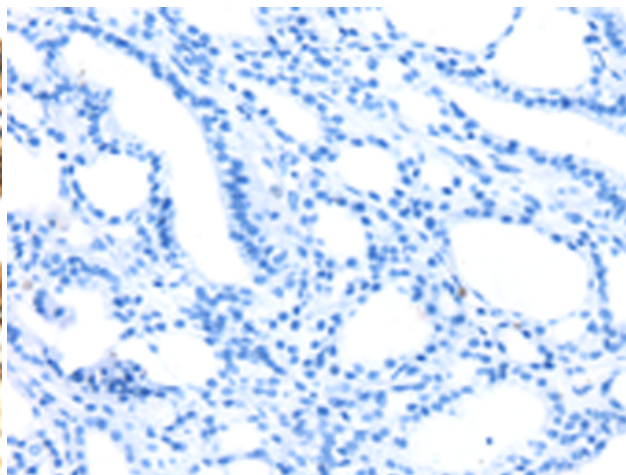


SERPINB1 RABBIT PAB**Cat.#:** S211546**Product Name:** Anti-SERPINB1 Rabbit Polyclonal Antibody**Synonyms:** EI; LEI; PI2; MNEI; PI-2; HEL57; M/NEI; ELANH2**UNIPROT ID:** P30740 (Gene Accession - BC009015)**Background:** The protein encoded by this gene is a member of the serpin family of proteinase inhibitors. Members of this family maintain homeostasis by neutralizing overexpressed proteinase activity through their function as suicide substrates. This protein inhibits the neutrophil-derived proteinases neutrophil elastase, cathepsin G, and proteinase-3 and thus protects tissues from damage at inflammatory sites. Alternative splicing results in multiple transcript variants.**Immunogen:** Fusion protein of human SERPINB1**Applications:** ELISA, IHC**Recommended Dilutions:** IHC: 25-100; ELISA: 2000-5000**Host Species:** Rabbit**Clonality:** Rabbit Polyclonal**Isotype:** Immunogen-specific rabbit IgG**Purification:** Antigen affinity purification**Species Reactivity:** Human, Mouse**Constituents:** PBS (without Mg²⁺ and Ca²⁺), pH 7.4, 150 mM NaCl, 0.05% Sodium Azide and 40% glycerol**Research Areas:** Cell Biology, Cardiovascular**Storage & Shipping:** Store at -20°C. Avoid repeated freezing and thawing

Immunohistochemistry analysis of paraffin embedded Human thyroid cancer tissue using 211546 (SERPINB1 Antibody) at a dilution of 1/30 (Cytoplasm and Nucleus).



In comparison with the IHC on the left, the same paraffin-embedded Human thyroid cancer tissue is first treated with the fusion protein and then with 211546 (Anti-SERPINB1 Antibody) at dilution 1/30.