

SERPINB5 RABBIT PAB

Cat.#: S216634

Product Name: Anti-SERPINB5 Rabbit Polyclonal Antibody

Synonyms: PI5; maspin

UNIPROT ID: P36952 (Gene Accession - BC020713)

Background: Tumor suppressor. It blocks the growth, invasion, and metastatic properties of mammary tumors. As it does not undergo the S (stressed) to R (relaxed) conformational transition characteristic of active serpins, it exhibits no serine protease inhibitory activity.

Immunogen: Fusion protein of human SERPINB5

Applications: ELISA, WB, IHC

Recommended Dilutions: IHC: 100-200;WB: 500-2000;ELISA: 5000-10000

Host Species: Rabbit

Clonality: Rabbit Polyclonal

Isotype: Immunogen-specific rabbit IgG

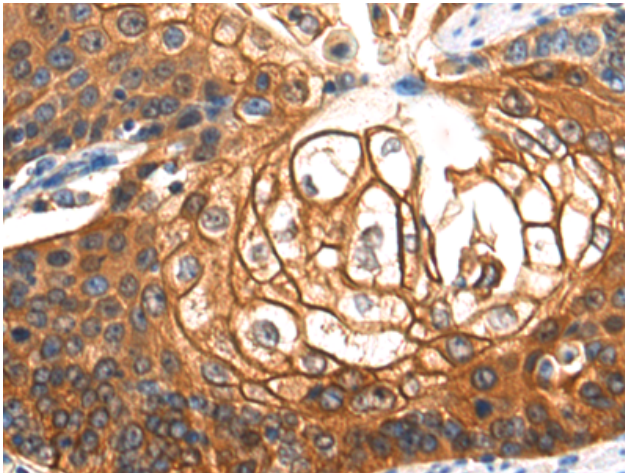
Purification: Antigen affinity purification

Species Reactivity: Human

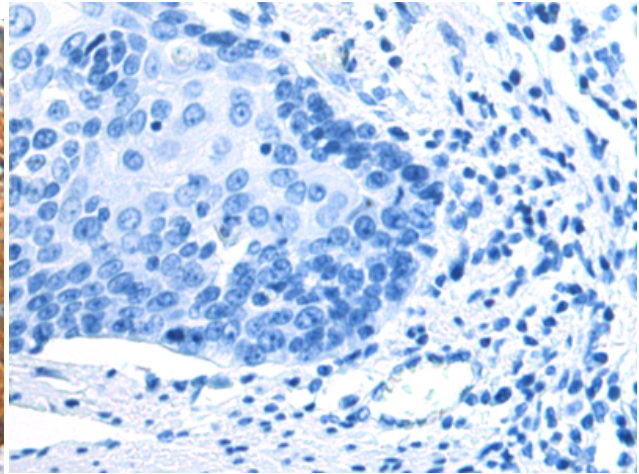
Constituents: PBS (without Mg²⁺ and Ca²⁺), pH 7.4, 150 mM NaCl, 0.05% Sodium Azide and 40% glycerol

Research Areas: Cancer

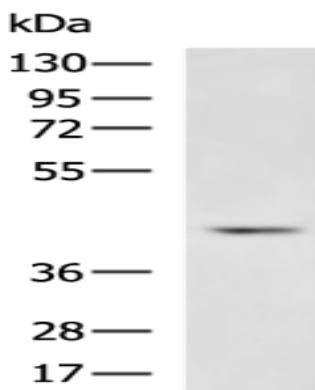
Storage & Shipping: Store at -20°C. Avoid repeated freezing and thawing



Immunohistochemistry analysis of paraffin embedded Human esophagus cancer tissue using 216634(SERPINB5 Antibody) at a dilution of 1/70(Cytoplasm).



In comparison with the IHC on the left, the same paraffin-embedded Human esophagus cancer tissue is first treated with the fusion protein and then with 216634(Anti-SERPINB5 Antibody) at dilution 1/70.



Gel: 8%SDS-PAGE, Lysate: 40 μ g;
Lane: PC3 cell lysate;
Primary antibody: 216634(SERPINB5 Antibody) at dilution 1/1000;
Secondary antibody: HRP-conjugated Goat anti rabbit IgG at 1/5000 dilution;
Exposure time: 1 minute