

SF2 RABBIT MAB

Cat.#: N262887

Product Name: Anti-SF2 Rabbit Monoclonal Antibody

Synonyms: ASF; SF2; SFRS1; SF2p33; SRp30a

UNIPROT ID: Q07955

Background: Plays a role in preventing exon skipping, ensuring the accuracy of splicing and regulating alternative splicing. Interacts with other spliceosomal components, via the RS domains, to form a bridge between the 5'- and 3'-splice site binding components, U1 snRNP and U2AF.

Immunogen: A synthetic peptide of human SF2

Applications: WB,IHC-F,IHC-P,ICC/IF

Recommended Dilutions: WB: 1/500-1/1000 IHC: 1/50-1/100 IF: 1/50-1/200

Host Species: Rabbit

Clonality: Rabbit Monoclonal

Clone ID: R07-9G7

MW: Calculated MW: 28 kDa; Observed MW: 28 kDa

Isotype: IgG

Purification: Affinity Purified

Species Reactivity: Human,Mouse,Rat

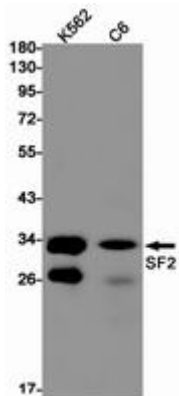
Conjugation: Unconjugated

Modification: Unmodified

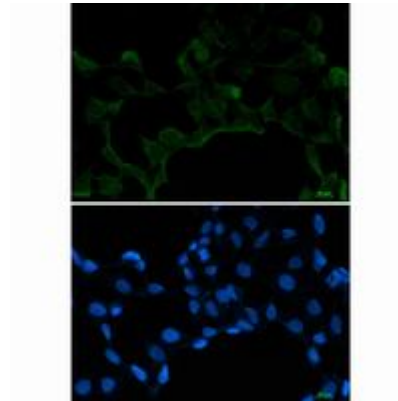
Constituents: PBS (without Mg²⁺ and Ca²⁺), pH 7.3 containing 50% glycerol, 0.5% BSA and 0.02% sodium azide

Research Areas: Epigenetics and Nuclear Signaling

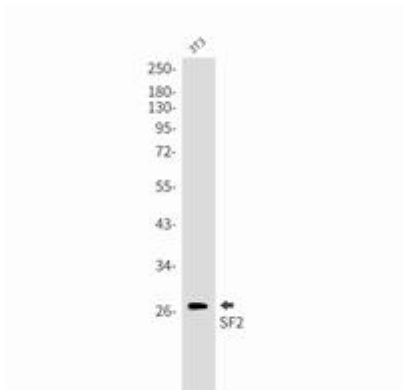
Storage & Shipping: Store at -20°C. Avoid repeated freezing and thawing



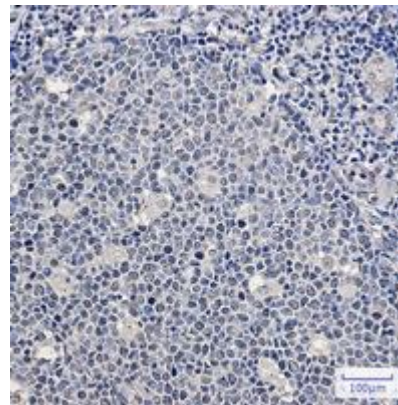
Western blot analysis of SF2 in K562, C6 lysates using SF2 antibody



Immunocytochemistry analysis of SF2 (green) in 293T using SF2 antibody, and DAPI (blue).



Western blot analysis of SF2 in 3T3 lysates using SF2 antibody.



Immunohistochemistry analysis of paraffin-embedded Human tonsil using SF2 antibody. High-pressure and temperature Sodium Citrate pH 6.0 was used for antigen retrieval.