

SF3B3 RABBIT MAB

Cat.#: N262888

Product Name: Anti-SF3B3 Rabbit Monoclonal Antibody

Synonyms: SF3B3; KIAA0017; SAP130; Splicing factor 3B subunit 3; Pre-mRNA-splicing factor SF3b 130 kDa subunit; SF3b130; STAF130; Spliceosome-associated protein 130; SAP 130

UNIPROT ID: Q15393

Background: Subunit of the splicing factor SF3B required for 'A' complex assembly formed by the stable binding of U2 snRNP to the branchpoint sequence (BPS) in pre-mRNA. Sequence independent binding of SF3A/SF3B complex upstream of the branch site is essential, it may anchor U2 snRNP to the pre-mRNA.

Immunogen: A synthetic peptide of human SF3B3

Applications: WB, ICC/IF

Recommended Dilutions: WB: 1/500-1/1000 IF: 1/50-1/200

Host Species: Rabbit

Clonality: Rabbit Monoclonal

Clone ID: R07-2K8

MW: Calculated MW: 136 kDa; Observed MW: 136 kDa

Isotype: IgG

Purification: Affinity Purified

Species Reactivity: Human, Mouse, Rat

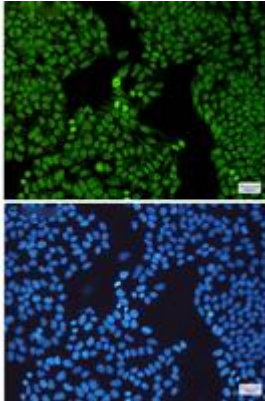
Conjugation: Unconjugated

Modification: Unmodified

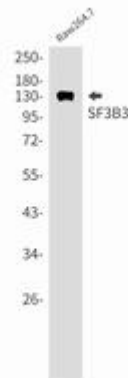
Constituents: PBS (without Mg²⁺ and Ca²⁺), pH 7.3 containing 50% glycerol, 0.5% BSA and 0.02% sodium azide

Research Areas: Epigenetics and Nuclear Signaling

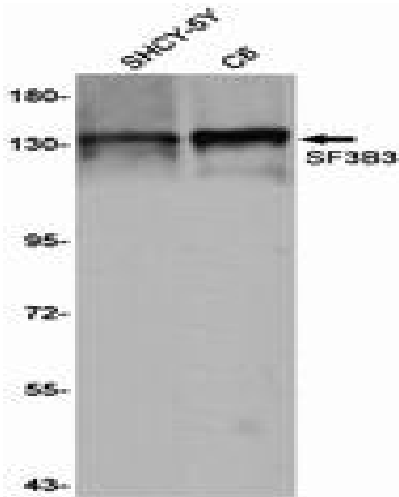
Storage & Shipping: Store at -20°C. Avoid repeated freezing and thawing



Immunocytochemistry analysis of SF3B3 (green) in Hela using SF3B3 antibody, and DAPI (blue)



Western blot analysis of SF3B3 in Raw264.7 lysates using SF3B3 antibody.



Western blot analysis of SF3B3 in SH-SY5Y, C6 lysates using SF3B3 antibody.