

SFPQ RABBIT MAB

Cat.#: N262889

Product Name: Anti-SFPQ Rabbit Monoclonal Antibody

Synonyms: PSF; POMP100; PPP1R140

UNIPROT ID: P23246

Background: DNA- and RNA binding protein, involved in several nuclear processes. Essential pre-mRNA splicing factor required early in spliceosome formation and for splicing catalytic step II, probably as a heteromer with NONO. Binds to pre-mRNA in spliceosome C complex, and specifically binds to intronic polypyrimidine tracts.

Immunogen: A synthetic peptide of human SFPQ

Applications: WB,IHC-F,IHC-P,ICC/IF

Recommended Dilutions: WB: 1/500-1/1000 IHC: 1/50-1/100 IF: 1/50-1/200

Host Species: Rabbit

Clonality: Rabbit Monoclonal

Clone ID: R07-9K6

MW: Calculated MW: 76 kDa; Observed MW: 100 kDa

Isotype: IgG

Purification: Affinity Purified

Species Reactivity: Human,Mouse,Rat

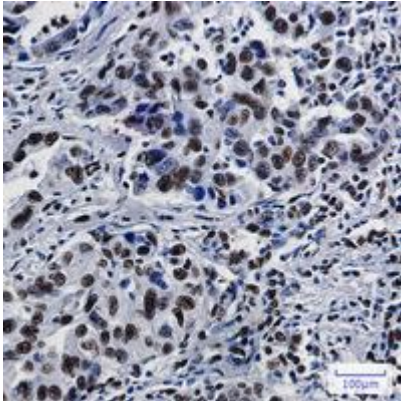
Conjugation: Unconjugated

Modification: Unmodified

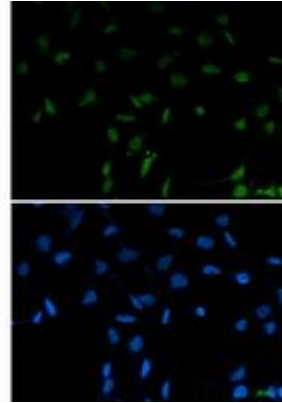
Constituents: PBS (without Mg²⁺ and Ca²⁺), pH 7.3 containing 50% glycerol, 0.5% BSA and 0.02% sodium azide

Research Areas: Epigenetics and Nuclear Signaling

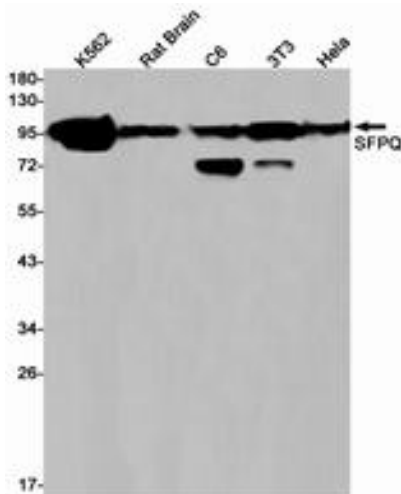
Storage & Shipping: Store at -20°C. Avoid repeated freezing and thawing



Immunohistochemistry analysis of paraffin-embedded Human lung cancer tissue using SFPQ antibody. High-pressure and temperature Sodium Citrate pH 6.0 was used for antigen retrieval.



Immunocytochemistry analysis of SFPQ (green) in 293T using SFPQ antibody, and DAPI (blue).



Western blot analysis of SFPQ in K562, rat Brain, C6, 3T3, HeLa lysates using SFPQ antibody.