

## SFR1 RABBIT PAB

**Cat.#:** S215395

**Product Name:** Anti-SFR1 Rabbit Polyclonal Antibody

**Synonyms:** MEI5; MEIR5; C10orf78; bA373N18.1

**UNIPROT ID:** Q86XK3 (Gene Accession - NP\_001002759 )

**Background:** Component of the SWI5-SFR1 complex, a complex required for double-strand break repair via homologous recombination (PubMed:21252223). Acts as a transcriptional modulator for ESRI (PubMed:23874500).

**Immunogen:** Synthetic peptide of human SFR1

**Applications:** ELISA, IHC

**Recommended Dilutions:** IHC: 20-100; ELISA: 5000-10000

**Host Species:** Rabbit

**Clonality:** Rabbit Polyclonal

**Isotype:** Immunogen-specific rabbit IgG

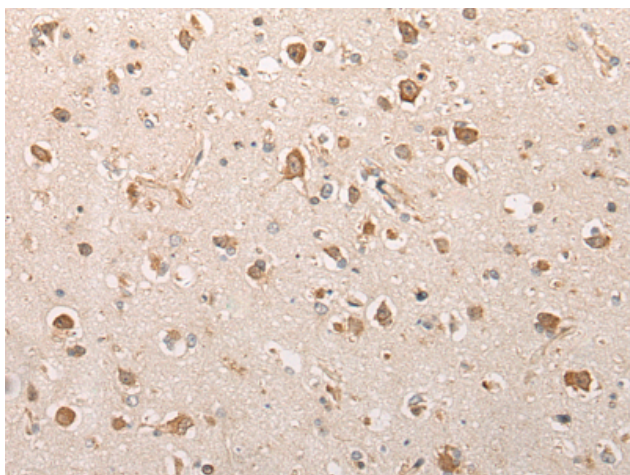
**Purification:** Antigen affinity purification

**Species Reactivity:** Human, Mouse, Rat

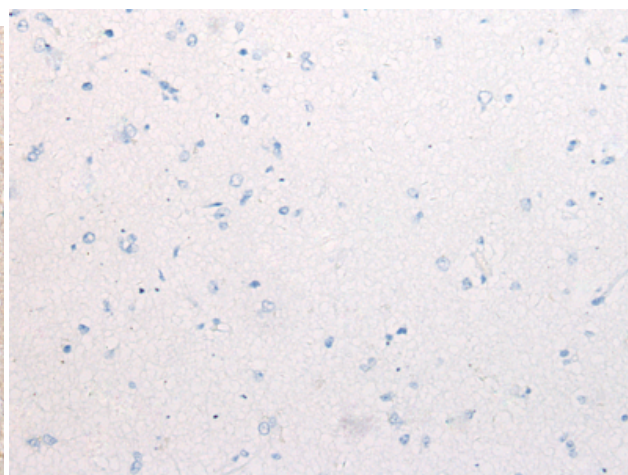
**Constituents:** PBS (without Mg<sup>2+</sup> and Ca<sup>2+</sup>), pH 7.4, 150 mM NaCl, 0.05% Sodium Azide and 40% glycerol

**Research Areas:** Epigenetics and Nuclear Signaling

**Storage & Shipping:** Store at -20°C. Avoid repeated freezing and thawing



Immunohistochemistry analysis of paraffin embedded Human brain tissue using 215395(SFR1 Antibody) at a dilution of 1/30(Nucleus).



In comparison with the IHC on the left, the same paraffin-embedded Human brain tissue is first treated with the synthetic peptide and then with 215395(Anti-SFR1 Antibody) at dilution 1/30.