

## SFRP5 RABBIT PAB

**Cat.#:** S219758

**Product Name:** Anti-SFRP5 Rabbit Polyclonal Antibody

**Synonyms:** SARP3

**UNIPROT ID:** Q5T4F7 (Gene Accession - NP\_003006 )

**Background:** Secreted frizzled-related protein 5 (SFRP5) is a member of the SFRP family that contains a cysteine-rich domain homologous to the putative Wnt-binding site of Frizzled proteins. SFRPs act as soluble modulators of Wnt signaling. SFRP5 and SFRP1 may be involved in determining the polarity of photoreceptor cells in the retina. SFRP5 is highly expressed in the retinal pigment epithelium, and moderately expressed in the pancreas.

**Immunogen:** Synthetic peptide of human SFRP5

**Applications:** ELISA, IHC

**Recommended Dilutions:** IHC: 25-100; ELISA: 5000-10000

**Host Species:** Rabbit

**Clonality:** Rabbit Polyclonal

**Isotype:** Immunogen-specific rabbit IgG

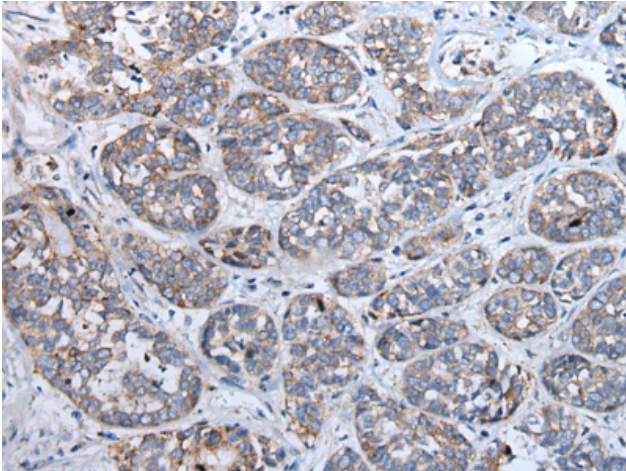
**Purification:** Antigen affinity purification

**Species Reactivity:** Human, Mouse

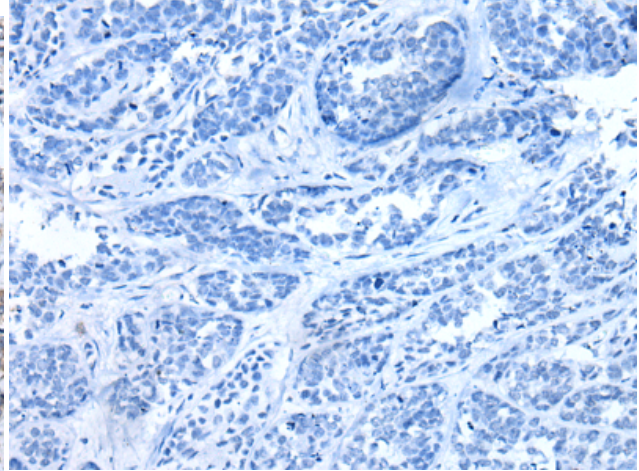
**Constituents:** PBS (without Mg<sup>2+</sup> and Ca<sup>2+</sup>), pH 7.4, 150 mM NaCl, 0.05% Sodium Azide and 40% glycerol

**Research Areas:** Signal Transduction

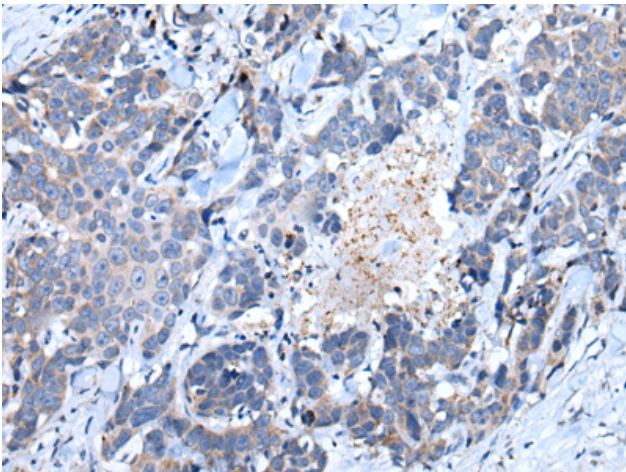
**Storage & Shipping:** Store at -20°C. Avoid repeated freezing and thawing



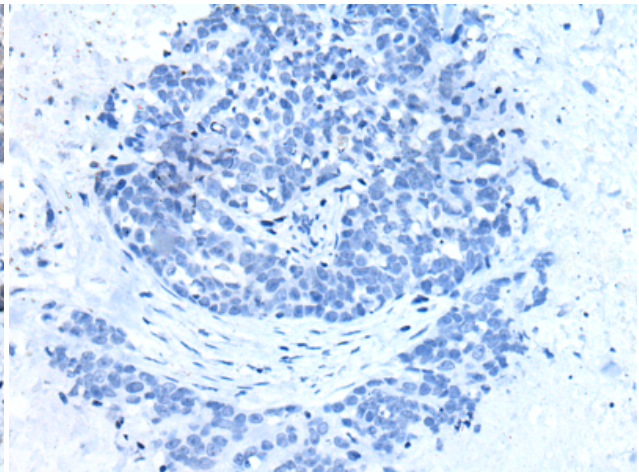
Immunohistochemistry analysis of paraffin embedded Human esophagus cancer tissue using 219758 (SFRP5 Antibody) at a dilution of 1/35 (Cytoplasm and Cell membrane).



In comparison with the IHC on the left, the same paraffin-embedded Human esophagus cancer tissue is first treated with the synthetic peptide and then with 219758 (Anti-SFRP5 Antibody) at dilution 1/35.



The image on the left is immunohistochemistry of paraffin-embedded Human thyroid cancer tissue using 219758 (Anti-SFRP5 Antibody) at a dilution of 1/35.



In comparison with the IHC on the left, the same paraffin-embedded Human thyroid cancer tissue is first treated with synthetic peptide and then with D260295 (Anti-SFRP5 Antibody) at dilution 1/35.