

SFT RABBIT MAB

Cat.#: N263547

Product Name: Anti-SFT Rabbit Monoclonal Antibody

Synonyms: ubiquitin conjugating enzyme E2 D1; SFT; UBCH5; UBC4/5; UBCH5A; E2(17)KBI

UNIPROT ID: P51668

Background: Accepts ubiquitin from the E1 complex and catalyzes its covalent attachment to other proteins.

Immunogen: A synthetic peptide of human SFT

Applications: WB,IHC-P,IP

Recommended Dilutions: WB: 1/500-1/1000 IHC: 1/50-1/100 IP: 1/20

Host Species: Rabbit

Clonality: Rabbit Monoclonal

Clone ID: R07-4E8

MW: Calculated MW: 17 kDa; Observed MW: 17 kDa

Isotype: IgG

Purification: Affinity Purified

Species Reactivity: Human,Mouse

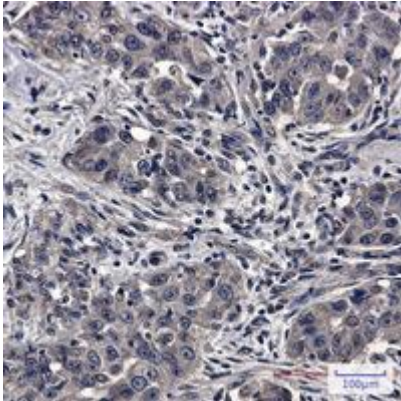
Conjugation: Unconjugated

Modification: Unmodified

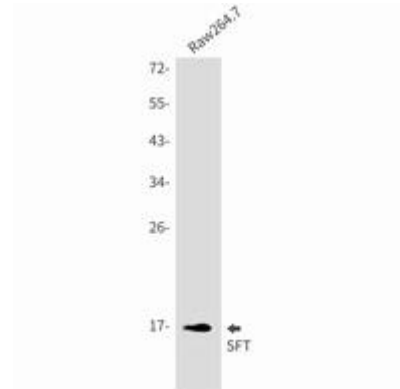
Constituents: PBS (without Mg²⁺ and Ca²⁺), pH 7.3 containing 50% glycerol, 0.5% BSA and 0.02% sodium azide

Research Areas: -

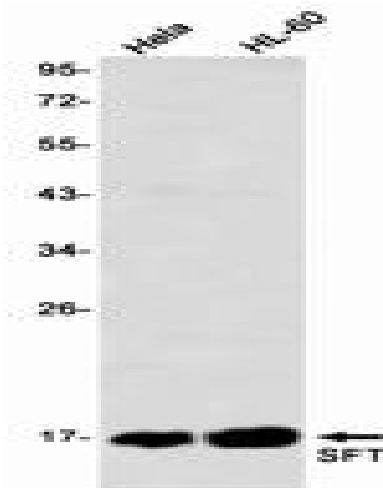
Storage & Shipping: Store at -20°C. Avoid repeated freezing and thawing



Immunohistochemistry analysis of paraffin-embedded Human lung cancer using SFT antibody. High-pressure and temperature Sodium Citrate pH 6.0 was used for antigen retrieval.



Western blot analysis of SFT in Raw264.7 lysates using SFT antibody.



Western blot analysis of SFT in HeLa, HL-60 lysates using SFT antibody.