

## SGCG RABBIT PAB

**Cat.#:** S221895

**Product Name:** Anti-SGCG Rabbit Polyclonal Antibody

**Synonyms:** A4; MAM; DMDA; SCG3; 35DAG; DAGA4; DMDA1; LGMD2C; LGMDR5; SCARMD2; gamma-SG

**UNIPROT ID:** Q13326 (Gene Accession - NP\_000222 )

**Background:** This gene encodes gamma-sarcoglycan, one of several sarcolemmal transmembrane glycoproteins that interact with dystrophin. The dystrophin-glycoprotein complex (DGC) spans the sarcolemma and is comprised of dystrophin, syntrophin, alpha- and beta-dystroglycans and sarcoglycans. The DGC provides a structural link between the subsarcolemmal cytoskeleton and the extracellular matrix of muscle cells. Defects in the encoded protein can lead to early onset autosomal recessive muscular dystrophy, in particular limb-girdle muscular dystrophy, type 2C (LGMD2C).

**Immunogen:** Synthetic peptide of human SGCG

**Applications:** ELISA, WB, IHC

**Recommended Dilutions:** IHC: 50-200;WB: 200-1000;ELISA: 5000-10000

**Host Species:** Rabbit

**Clonality:** Rabbit Polyclonal

**Isotype:** Immunogen-specific rabbit IgG

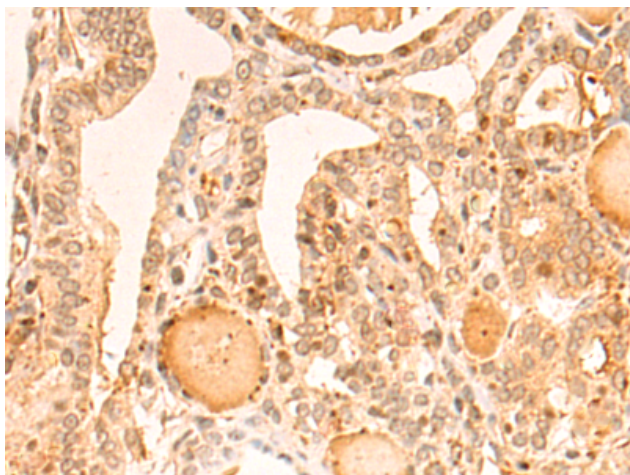
**Purification:** Antigen affinity purification

**Species Reactivity:** Human, Mouse

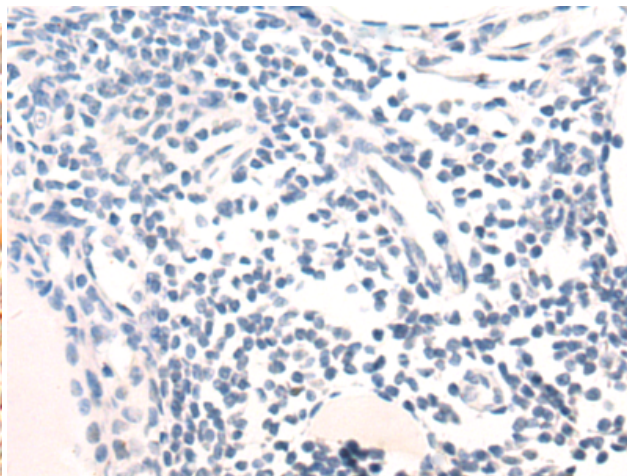
**Constituents:** PBS (without Mg<sup>2+</sup> and Ca<sup>2+</sup>), pH 7.4, 150 mM NaCl, 0.05% Sodium Azide and 40% glycerol

**Research Areas:** Signal Transduction

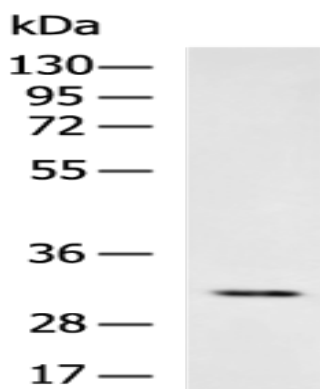
**Storage & Shipping:** Store at -20°C. Avoid repeated freezing and thawing



Immunohistochemistry analysis of paraffin embedded Human thyroid cancer tissue using 221895(SGCG Antibody) at a dilution of 1/55(Cytoplasm and Cell membrane).



In comparison with the IHC on the left, the same paraffin-embedded Human thyroid cancer tissue is first treated with the synthetic peptide and then with 221895(Anti-SGCG Antibody) at dilution 1/55.



Gel: 8%SDS-PAGE, Lysate: 40  $\mu$ g;  
Lane: Mouse liver tissue lysate;  
Primary antibody: 221895(SGCG Antibody) at dilution 1/400;  
Secondary antibody: HRP-conjugated Goat anti rabbit IgG at 1/5000 dilution;  
Exposure time: 30 seconds