

SGLT1 RABBIT PAB

Cat.#: N225493

Product Name: Anti-SGLT1 Rabbit pAb

Synonyms: SLC5A1; NAGT; SGLT1; Sodium/glucose cotransporter 1; Na(+)/glucose cotransporter 1; High affinity sodium-glucose cotransporter; Solute carrier family 5 member 1

UNIPROT ID: P13866

Background: Actively transports glucose into cells by Na⁺ cotransport with a Na⁺ to glucose coupling ratio of 2:1. Efficient substrate transport in mammalian kidney is provided by the concerted action of a low affinity high capacity and a high affinity low capacity Na⁺/glucose cotransporter arranged in series along kidney proximal tubules.

Immunogen: The antiserum was produced against synthesized peptide derived from human SGLT-1. AA range:525-574

Applications: WB,ELISA

Recommended Dilutions: WB: 1/500-1/1000 ELISA: 1/10000

Host Species: Rabbit

Clonality: Rabbit Polyclonal

Clone ID: -

MW: Calculated MW: 73 kDa; Observed MW: 73 kDa

Isotype: IgG

Purification: Affinity Chromatography

Species Reactivity: Human,Mouse,Rat

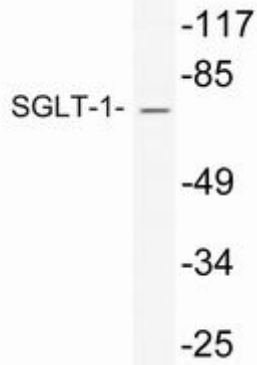
Conjugation: Unconjugated

Modification: Unmodified

Constituents: PBS (without Mg²⁺ and Ca²⁺), pH 7.3 containing 50% glycerol, 0.5% BSA and 0.02% sodium azide

Research Areas: Signal Transduction

Storage & Shipping: Store at -20°C. Avoid repeated freezing and thawing



Western blot analysis of SGLT1 in HepG2 lysates using SGLT1 antibody.