

SGSM1 RABBIT MAB

Cat.#: N262892

Product Name: Anti-SGSM1 Rabbit Monoclonal Antibody

Synonyms: RUTBC2

UNIPROT ID: Q2NKQ1

Background: Interacts with numerous Rab family members, functioning as Rab effector for some, and as GTPase activator for others. Promotes GTP hydrolysis by RAB34 and RAB36. Probably functions as GTPase effector with RAB9A and RAB9B; does not stimulate GTP hydrolysis with RAB9A and RAB9B.

Immunogen: A synthetic peptide of human SGSM1

Applications: WB, ICC/IF

Recommended Dilutions: WB: 1/500-1/1000 IF: 1/50-1/200

Host Species: Rabbit

Clonality: Rabbit Monoclonal

Clone ID: R07-5H6

MW: Calculated MW: 130 kDa; Observed MW: 130 kDa

Isotype: IgG

Purification: Affinity Purified

Species Reactivity: Human

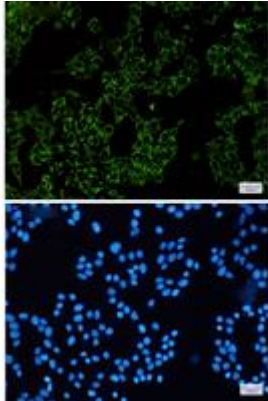
Conjugation: Unconjugated

Modification: Unmodified

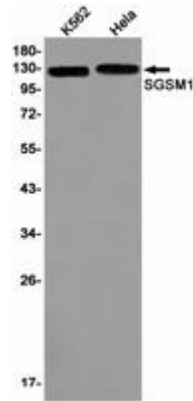
Constituents: PBS (without Mg²⁺ and Ca²⁺), pH 7.3 containing 50% glycerol, 0.5% BSA and 0.02% sodium azide

Research Areas: Signal Transduction

Storage & Shipping: Store at -20°C. Avoid repeated freezing and thawing



Immunocytochemistry analysis of SGSM1 (green) in HeLa using SGSM1 antibody, and DAPI (blue)



Western blot analysis of SGSM1 in K562, HeLa lysates using SGSM1 antibody.