

SH3YL1 RABBIT PAB

Cat.#: S212885

Product Name: Anti-SH3YL1 Rabbit Polyclonal Antibody

Synonyms: RAY

UNIPROT ID: Q96HL8 (Gene Accession - BC030778)

Background: The exact function of SH3YL1 remains unknown.

Immunogen: Fusion protein of human SH3YL1

Applications: ELISA, IHC

Recommended Dilutions: IHC: 50-200; ELISA: 5000-10000

Host Species: Rabbit

Clonality: Rabbit Polyclonal

Isotype: Immunogen-specific rabbit IgG

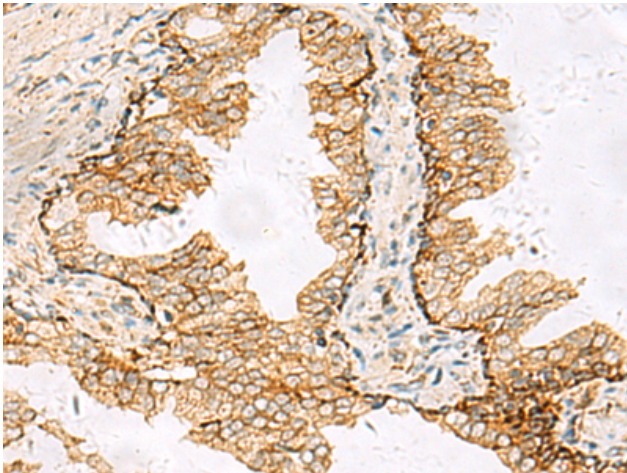
Purification: Antigen affinity purification

Species Reactivity: Human, Mouse, Rat

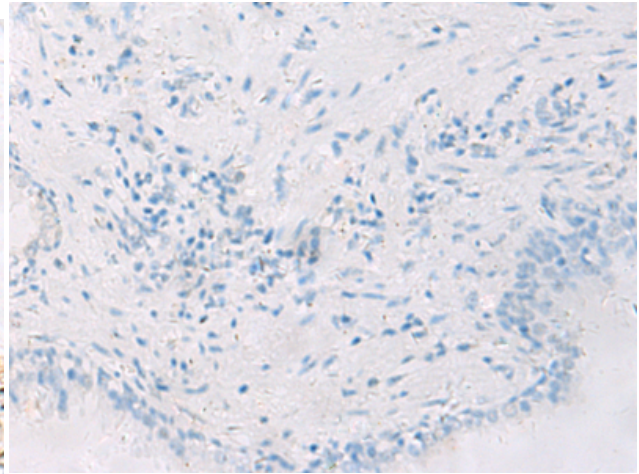
Constituents: PBS (without Mg²⁺ and Ca²⁺), pH 7.4, 150 mM NaCl, 0.05% Sodium Azide and 40% glycerol

Research Areas: Cell Biology

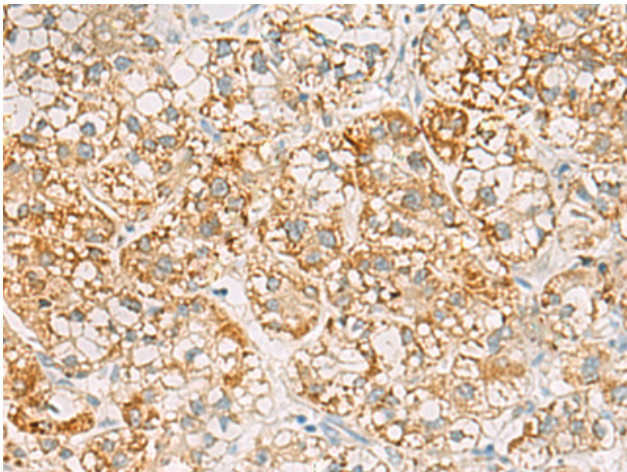
Storage & Shipping: Store at -20°C. Avoid repeated freezing and thawing



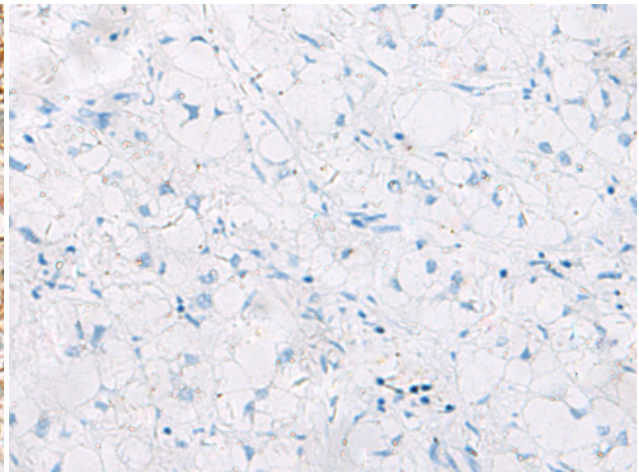
Immunohistochemistry analysis of paraffin embedded Human prostate cancer tissue using 212885(SH3YL1 Antibody) at a dilution of 1/55(Cytoplasm and Cell membrane).



In comparison with the IHC on the left, the same paraffin-embedded Human prostate cancer tissue is first treated with the fusion protein and then with 212885(Anti-SH3YL1 Antibody) at dilution 1/55.



The image on the left is immunohistochemistry of paraffin-embedded Human liver cancer tissue using 212885(Anti-SH3YL1 Antibody) at a dilution of 1/55.



In comparison with the IHC on the left, the same paraffin-embedded Human liver cancer tissue is first treated with fusion protein and then with D126017(Anti-SH3YL1 Antibody) at dilution 1/55.