

SHC4 RABBIT PAB

Cat.#: S219162

Product Name: Anti-SHC4 Rabbit Polyclonal Antibody

Synonyms: RaLP; SHCD

UNIPROT ID: Q6S5L8 (Gene Accession - BC033907)

Background: Activates both Ras-dependent and Ras-independent migratory pathways in melanomas. Contributes to the early phases of agrin-induced tyrosine phosphorylation of CHRNBI.

Immunogen: Fusion protein of human SHC4

Applications: ELISA, IHC

Recommended Dilutions: IHC: 70-350; ELISA: 5000-10000

Host Species: Rabbit

Clonality: Rabbit Polyclonal

Isotype: Immunogen-specific rabbit IgG

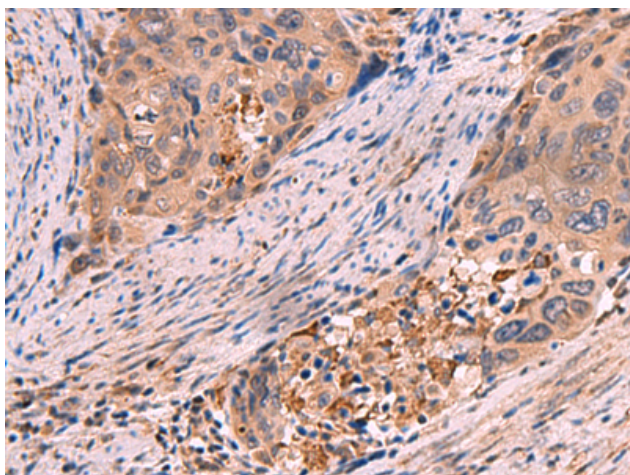
Purification: Antigen affinity purification

Species Reactivity: Human

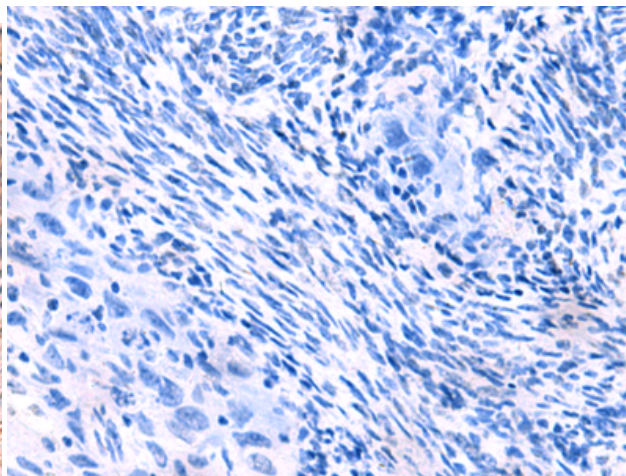
Constituents: PBS (without Mg²⁺ and Ca²⁺), pH 7.4, 150 mM NaCl, 0.05% Sodium Azide and 40% glycerol

Research Areas: Signal Transduction

Storage & Shipping: Store at -20°C. Avoid repeated freezing and thawing



Immunohistochemistry analysis of paraffin embedded Human cervical cancer tissue using 219162(SHC4 Antibody) at a dilution of 1/85(Cytoplasm).



In comparison with the IHC on the left, the same paraffin-embedded Human cervical cancer tissue is first treated with the fusion protein and then with 219162(Anti-SHC4 Antibody) at dilution 1/85.