

SHP1 (2B7) MOUSE MAB

Cat.#: N261151

Product Name: Anti-SHP1 (2B7) Mouse Monoclonal Antibody

Synonyms: PTPN6; HCP; PTP1C; Tyrosine-protein phosphatase non-receptor type 6; Hematopoietic cell protein-tyrosine phosphatase; Protein-tyrosine phosphatase 1C; PTP-1C; Protein-tyrosine phosphatase SHP-1; SH-PTP1

UNIPROT ID: P29350

Background: The protein encoded by this gene is a member of the protein tyrosine phosphatase (PTP) family. PTPs are known to be signaling molecules that regulate a variety of cellular processes including cell growth, differentiation, mitotic cycle, and oncogenic transformation.

Immunogen: Purified recombinant human SHP-1 protein fragments expressed in E.coli.

Applications: WB,IP

Recommended Dilutions: WB: 1/500-1/1000 IP: 1/20

Host Species: Mouse

Clonality: Mouse Monoclonal

Clone ID: 2B7-H7-F8

MW: Calculated MW: 68 kDa; Observed MW: 68 kDa

Isotype: IgG2a

Purification: Affinity Purified

Species Reactivity: Human

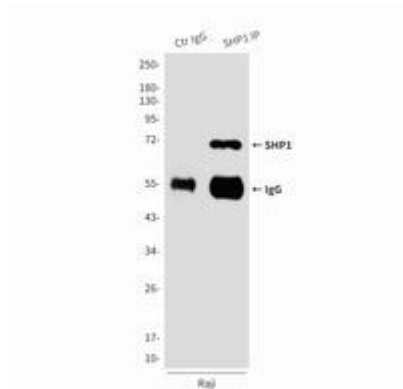
Conjugation: Unconjugated

Modification: Unmodified

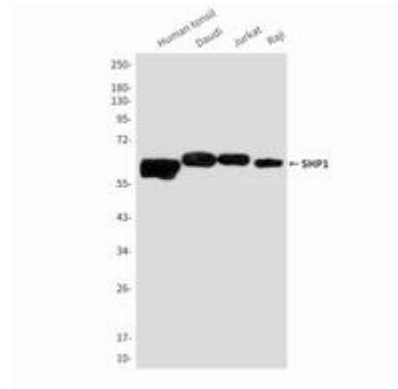
Constituents: PBS (without Mg²⁺ and Ca²⁺), pH 7.3 containing 50% glycerol, 0.5% BSA and 0.02% sodium azide

Research Areas: Cell Biology

Storage & Shipping: Store at -20°C. Avoid repeated freezing and thawing



Immunoprecipitation analysis of SHP1 (2B7) in Raji lysates using SHP1 antibody.



Western blot analysis of SHP1 in Human tonsil, Daudi, Jurkat and Raji lysates using SHP1 antibody.