

## SHPRH RABBIT PAB

**Cat.#:** S217814

**Product Name:** Anti-SHPRH Rabbit Polyclonal Antibody

**Synonyms:** bA545I5.2

**UNIPROT ID:** Q149N8 (Gene Accession - BC117686 )

**Background:** SHPRH is a ubiquitously expressed protein that contains motifs characteristics of several DNA repair proteins, transcription factors, and helicases. SHPRH is a functional homolog of *S. cerevisiae* RAD5 (Unk et al., 2006 [PubMed 17108083]).

**Immunogen:** Fusion protein of human SHPRH

**Applications:** ELISA, IHC

**Recommended Dilutions:** IHC: 30-150; ELISA: 2000-10000

**Host Species:** Rabbit

**Clonality:** Rabbit Polyclonal

**Isotype:** Immunogen-specific rabbit IgG

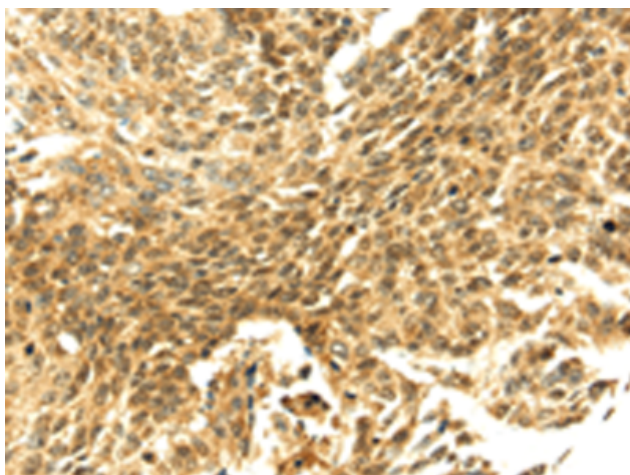
**Purification:** Antigen affinity purification

**Species Reactivity:** Human, Mouse

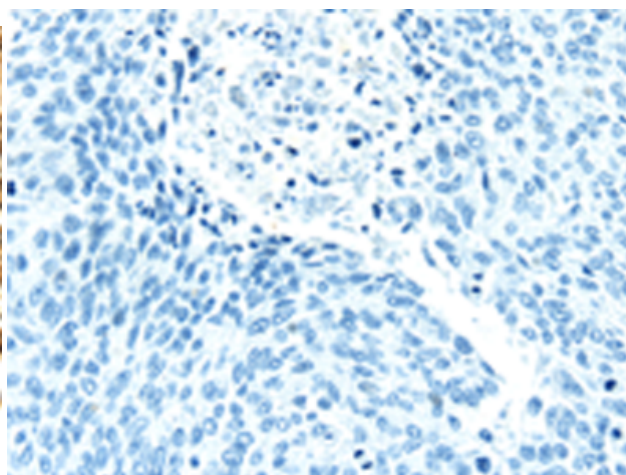
**Constituents:** PBS (without Mg<sup>2+</sup> and Ca<sup>2+</sup>), pH 7.4, 150 mM NaCl, 0.05% Sodium Azide and 40% glycerol

**Research Areas:** Epigenetics and Nuclear Signaling, Cancer, Cell Biology

**Storage & Shipping:** Store at -20°C. Avoid repeated freezing and thawing



Immunohistochemistry analysis of paraffin embedded Human lung cancer tissue using 217814(SHPRH Antibody) at a dilution of 1/40(Cytoplasm and Nucleus).



In comparison with the IHC on the left, the same paraffin-embedded Human lung cancer tissue is first treated with the fusion protein and then with 217814(Anti-SHPRH Antibody) at dilution 1/40.