

SHROOM2 RABBIT PAB

Cat.#: S214075

Product Name: Anti-SHROOM2 Rabbit Polyclonal Antibody

Synonyms: APXL; HSAPXL

UNIPROT ID: Q13796 (Gene Accession - NP_001640)

Background: The protein encoded by this gene shares significant similarities with the apical protein from *Xenopus laevis* which is implicated in amiloride-sensitive sodium channel activity. This gene is a strong candidate gene for ocular albinism type 1 syndrome.

Immunogen: Synthetic peptide of human SHROOM2

Applications: ELISA, IHC

Recommended Dilutions: IHC: 50-200; ELISA: 2000-5000

Host Species: Rabbit

Clonality: Rabbit Polyclonal

Isotype: Immunogen-specific rabbit IgG

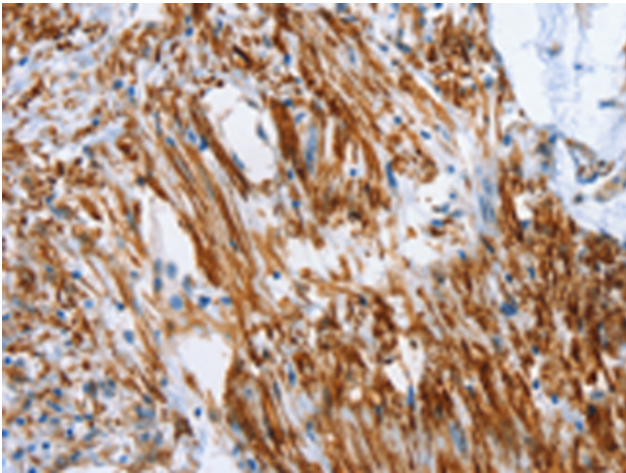
Purification: Antigen affinity purification

Species Reactivity: Human

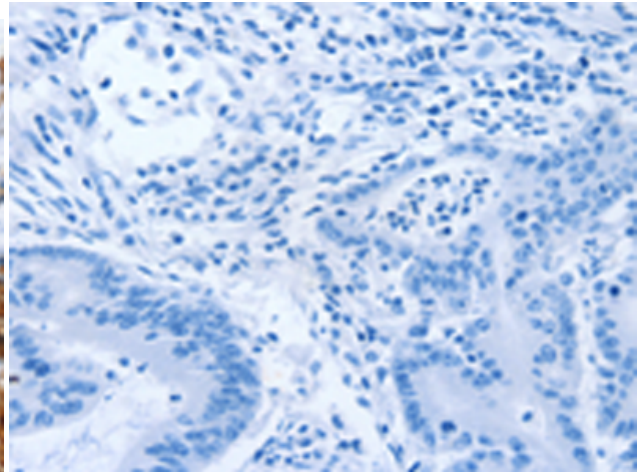
Constituents: PBS (without Mg²⁺ and Ca²⁺), pH 7.4, 150 mM NaCl, 0.05% Sodium Azide and 40% glycerol

Research Areas: Neuroscience

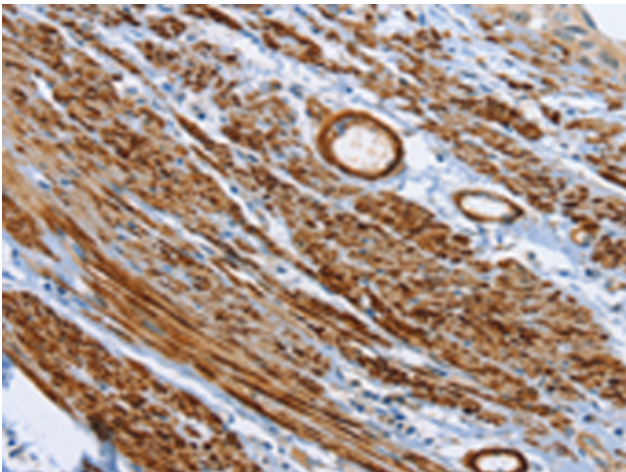
Storage & Shipping: Store at -20°C. Avoid repeated freezing and thawing



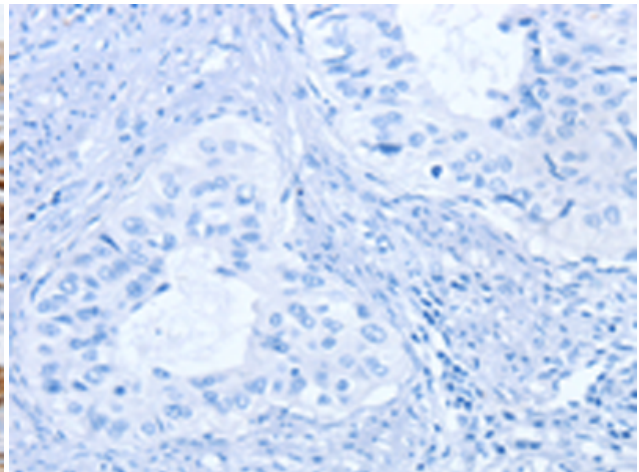
Immunohistochemistry analysis of paraffin embedded Human colon cancer tissue using 214075 (SHROOM2 Antibody) at a dilution of 1/50 (Cytoplasm).



In comparison with the IHC on the left, the same paraffin-embedded Human colon cancer tissue is first treated with the synthetic peptide and then with 214075 (Anti-SHROOM2 Antibody) at dilution 1/50.



The image on the left is immunohistochemistry of paraffin-embedded Human cervical cancer tissue using 214075 (Anti-SHROOM2 Antibody) at a dilution of 1/50.



In comparison with the IHC on the left, the same paraffin-embedded Human cervical cancer tissue is first treated with synthetic peptide and then with D161299 (Anti-SHROOM2 Antibody) at dilution 1/50.