

SIGLEC14 RABBIT PAB

Cat.#: S220911

Product Name: Anti-SIGLEC14 Rabbit Polyclonal Antibody

Synonyms:

UNIPROT ID: Q08ET2 (Gene Accession - NP_001092082)

Background: Putative adhesion molecule. Sialic acid-binding paired receptor which may activate associated receptors. Interacts with TYROBP. Mainly expressed in hematopoietic tissues including bone marrow, spleen and fetal liver. Siglec-14 is predominantly expressed in hematopoietic tissues but is also found in lung and testis.

Immunogen: Synthetic peptide of human SIGLEC14

Applications: ELISA, IHC

Recommended Dilutions: IHC: 25-100; ELISA: 1000-2000

Host Species: Rabbit

Clonality: Rabbit Polyclonal

Isotype: Immunogen-specific rabbit IgG

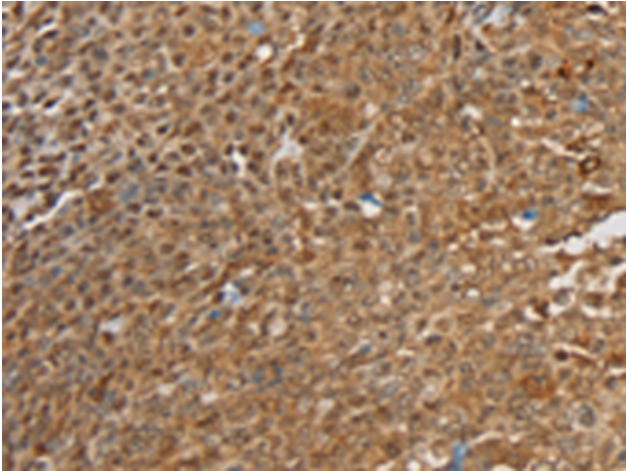
Purification: Antigen affinity purification

Species Reactivity: Human

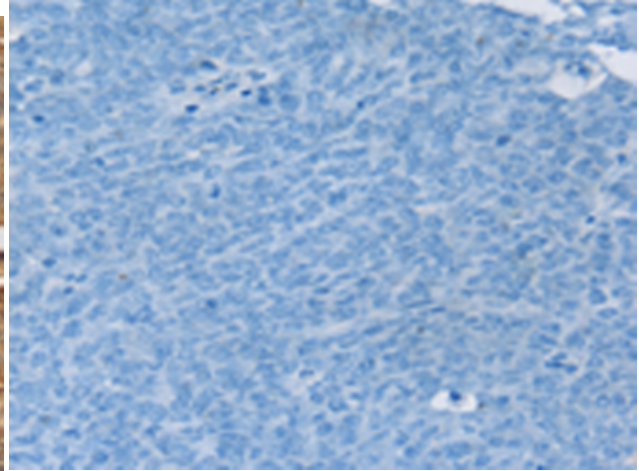
Constituents: PBS (without Mg²⁺ and Ca²⁺), pH 7.4, 150 mM NaCl, 0.05% Sodium Azide and 40% glycerol

Research Areas: Cell Biology

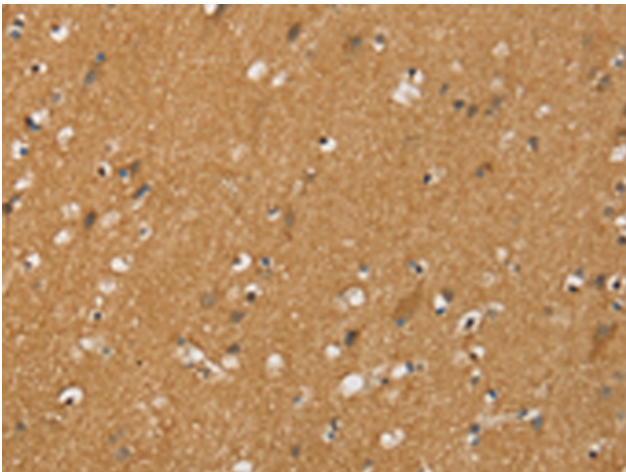
Storage & Shipping: Store at -20°C. Avoid repeated freezing and thawing



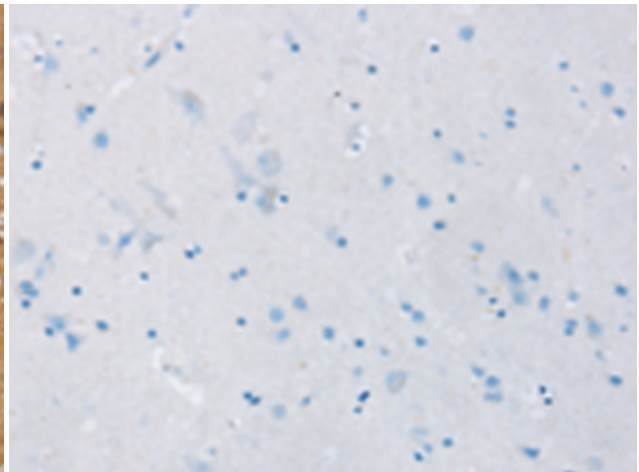
Immunohistochemistry analysis of paraffin embedded Human ovarian cancer tissue using 220911(SIGLEC14 Antibody) at a dilution of 1/30(Cytoplasm or Cell membrane).



In comparison with the IHC on the left, the same paraffin-embedded Human ovarian cancer tissue is first treated with the synthetic peptide and then with 220911(Anti-SIGLEC14 Antibody) at dilution 1/30.



The image on the left is immunohistochemistry of paraffin-embedded Human brain tissue using 220911(Anti-SIGLEC14 Antibody) at a dilution of 1/30.



In comparison with the IHC on the left, the same paraffin-embedded Human brain tissue is first treated with synthetic peptide and then with D262204(Anti-SIGLEC14 Antibody) at dilution 1/30.