

SIGLEC15 RABBIT PAB

Cat.#: S222418

Product Name: Anti-SIGLEC15 Rabbit Polyclonal Antibody

Synonyms: CD33L3; HsT1361; SIGLEC-15

UNIPROT ID: Q6ZMC9 (Gene Accession - NP_998767)

Background: Predicted to be involved in regulation of actin cytoskeleton organization; regulation of bone resorption; and regulation of osteoclast development. Predicted to be integral component of membrane. Predicted to be part of protein-containing complex. Predicted to be active in plasma membrane.

Immunogen: Synthetic peptide of human SIGLEC15

Applications: ELISA, WB, IHC

Recommended Dilutions: IHC: 50-100;WB: 500-2000;ELISA: 2000-5000

Host Species: Rabbit

Clonality: Rabbit Polyclonal

Isotype: Immunogen-specific rabbit IgG

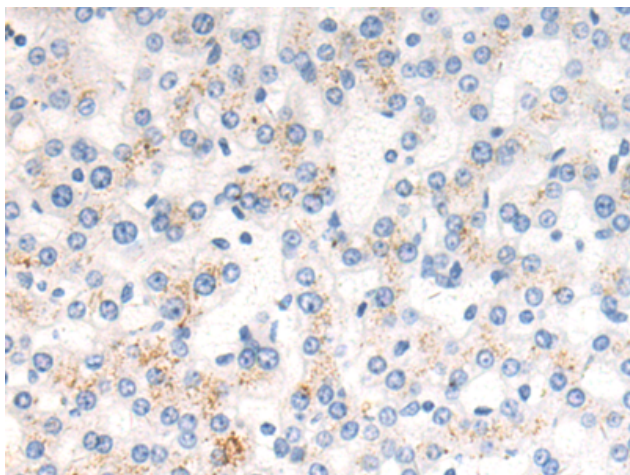
Purification: Antigen affinity purification

Species Reactivity: Human, Mouse

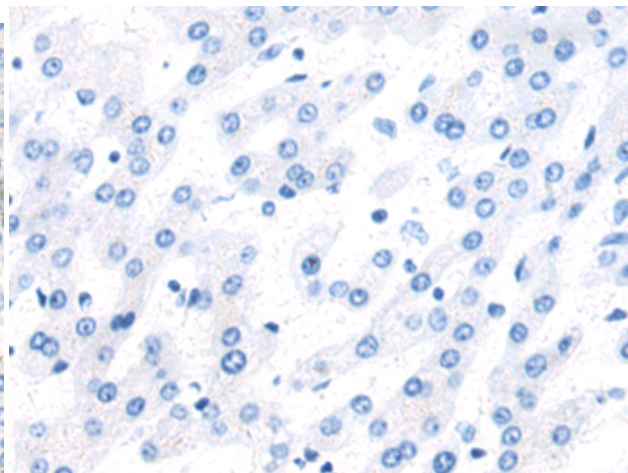
Constituents: PBS (without Mg²⁺ and Ca²⁺), pH 7.4, 150 mM NaCl, 0.05% Sodium Azide and 40% glycerol

Research Areas: Immunology

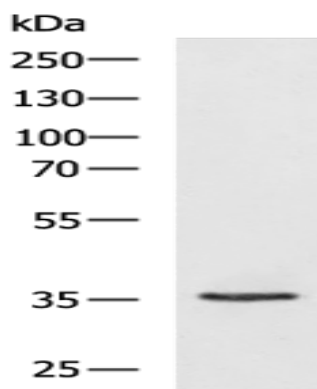
Storage & Shipping: Store at -20°C. Avoid repeated freezing and thawing



Immunohistochemistry analysis of paraffin embedded Human liver cancer tissue using 222418(SIGLEC15 Antibody) at a dilution of 1/50(Cytoplasm).



In comparison with the IHC on the left, the same paraffin-embedded Human liver cancer tissue is first treated with the synthetic peptide and then with 222418(Anti-SIGLEC15 Antibody) at dilution 1/50.



Gel: 8%SDS-PAGE, Lysate: 40 μ g;
Lane: Mouse urinary bladder tissue lysate;
Primary antibody: 222418(SIGLEC15 Antibody)
at dilution 1/1000;
Secondary antibody: HRP-conjugated Goat
anti rabbit IgG at 1/5000 dilution;
Exposure time: 1 minute