

SIGLEC5 RABBIT PAB

Cat.#: S217256

Product Name: Anti-SIGLEC5 Rabbit Polyclonal Antibody

Synonyms: CD170; OBBP2; CD33L2; OB-BP2; SIGLEC-5

UNIPROT ID: O15389 (Gene Accession - BC029896)

Background: This gene encodes a member of the sialic acid-binding immunoglobulin-like lectin (Siglec) family. These cell surface lectins are characterized by structural motifs in the immunoglobulin (Ig)-like domains and sialic acid recognition sites in the first Ig V set domain. The encoded protein is a member of the CD33-related subset of Siglecs and inhibits the activation of several cell types including monocytes, macrophages and neutrophils. Binding of group B Streptococcus (GBS) to the encoded protein plays a role in GBS immune evasion.

Immunogen: Fusion protein of human SIGLEC5

Applications: ELISA, WB, IHC

Recommended Dilutions: IHC: 50-200;WB: 500-2000;ELISA: 5000-10000

Host Species: Rabbit

Clonality: Rabbit Polyclonal

Isotype: Immunogen-specific rabbit IgG

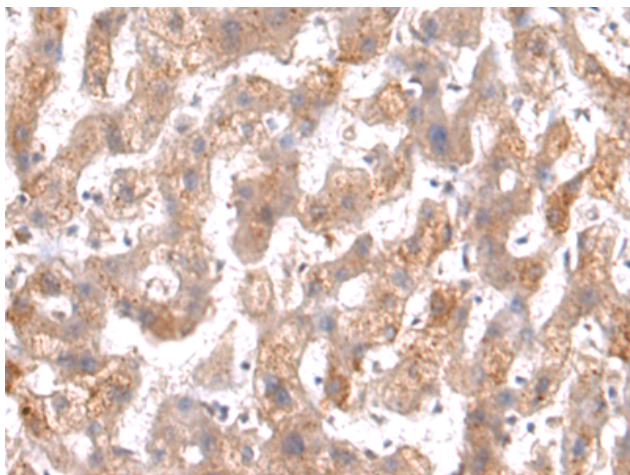
Purification: Antigen affinity purification

Species Reactivity: Human, Mouse

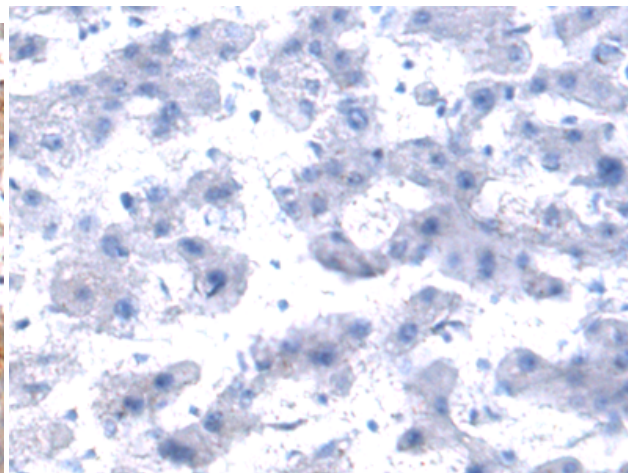
Constituents: PBS (without Mg²⁺ and Ca²⁺), pH 7.4, 150 mM NaCl, 0.05% Sodium Azide and 40% glycerol

Research Areas: Immunology

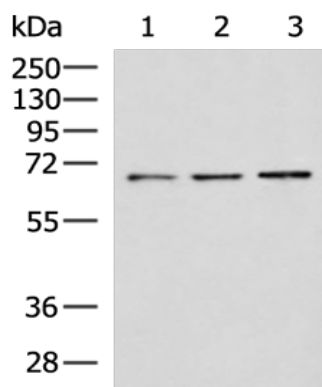
Storage & Shipping: Store at -20°C. Avoid repeated freezing and thawing



Immunohistochemistry analysis of paraffin embedded Human liver cancer tissue using 217256(SIGLEC5 Antibody) at a dilution of 1/55(Cytoplasm).



In comparison with the IHC on the left, the same paraffin-embedded Human liver cancer tissue is first treated with the fusion protein and then with 217256(Anti-SIGLEC5 Antibody) at dilution 1/55.



Gel: 8%SDS-PAGE, Lysate: 40 μ g;
Lane 1-3: Jurkat cell, Mouse liver tissue, LO2 cell lysates;
Primary antibody: 217256(SIGLEC5 Antibody) at dilution 1/700;
Secondary antibody: HRP-conjugated Goat anti rabbit IgG at 1/5000 dilution;
Exposure time: 2 minutes