

SIGLEC6 RABBIT PAB

Cat.#: S212818

Product Name: Anti-SIGLEC6 Rabbit Polyclonal Antibody

Synonyms: CD327; CD33L; OBBP1; CD33L1; CD33L2; CDW327

UNIPROT ID: O43699 (Gene Accession - BC035359)

Background: This gene encodes a member of the SIGLEC (sialic acid binding immunoglobulin-like lectin) family of proteins. The encoded transmembrane receptor binds sialyl-TN glycans and leptin. Placental expression of the encoded protein is upregulated in preeclampsia.

Immunogen: Fusion protein of human SIGLEC6

Applications: ELISA, WB, IHC

Recommended Dilutions: IHC: 40–200;WB: 500–2000;ELISA: 5000–10000

Host Species: Rabbit

Clonality: Rabbit Polyclonal

Isotype: Immunogen-specific rabbit IgG

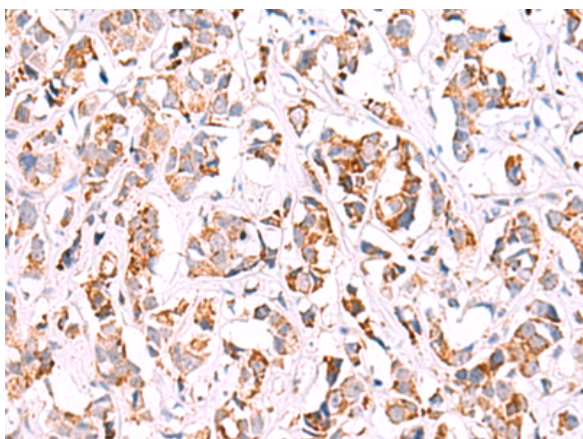
Purification: Antigen affinity purification

Species Reactivity: Human

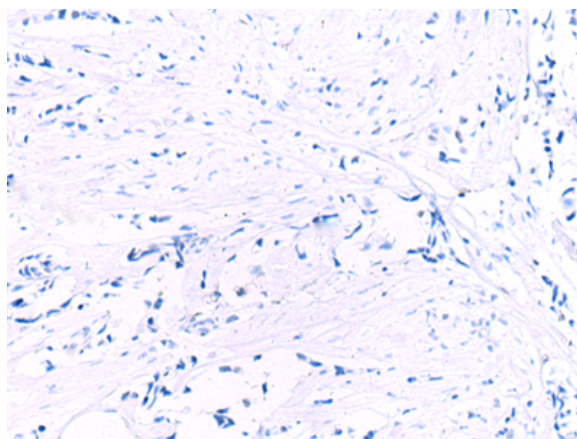
Constituents: PBS (without Mg²⁺ and Ca²⁺), pH 7.4, 150 mM NaCl, 0.05% Sodium Azide and 40% glycerol

Research Areas: Immunology

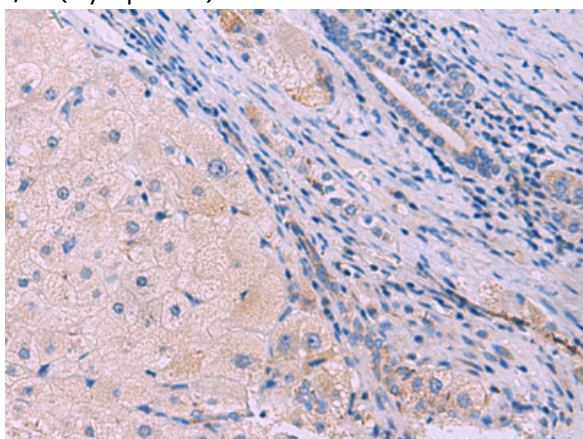
Storage & Shipping: Store at -20°C. Avoid repeated freezing and thawing



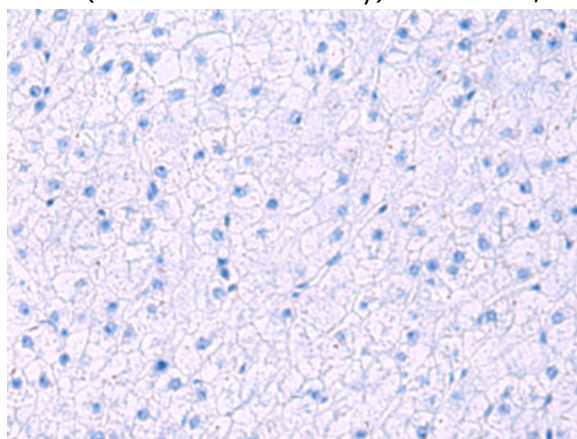
Immunohistochemistry analysis of paraffin embedded Human breast cancer tissue using 212818(SIGLEC6 Antibody) at a dilution of 1/50(Cytoplasm).



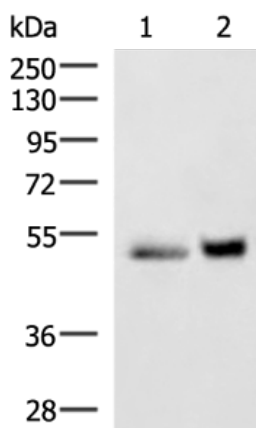
In comparison with the IHC on the left, the same paraffin-embedded Human breast cancer tissue is first treated with the fusion protein and then with 212818(Anti-SIGLEC6 Antibody) at dilution 1/50.



The image on the left is immunohistochemistry of paraffin-embedded Human liver cancer tissue using 212818(Anti-SIGLEC6 Antibody) at a dilution of 1/50.



In comparison with the IHC on the left, the same paraffin-embedded Human liver cancer tissue is first treated with fusion protein and then with D125880(Anti-SIGLEC6 Antibody) at dilution 1/50.



Gel: 8%SDS-PAGE, Lysate: 40 μ g;
 Lane 1-2: Human right lower lung tissue and Human plasma solution lysates;
 Primary antibody: 212818(SIGLEC6 Antibody) at dilution 1/650;
 Secondary antibody: HRP-conjugated Goat anti rabbit IgG at 1/5000 dilution;
 Exposure time: 30 seconds



Product Description

Pioneering GTPase and Oncogene Product Development since 2010
